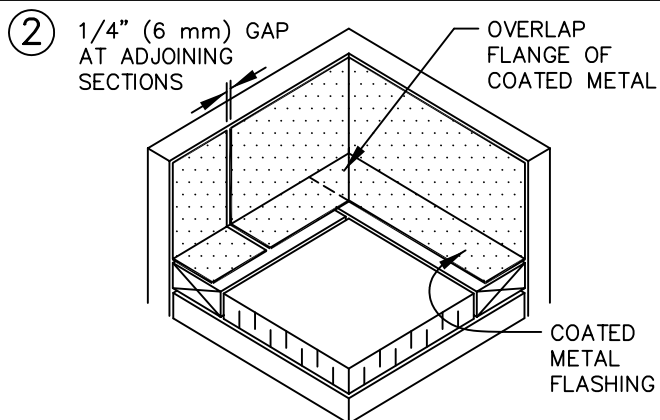
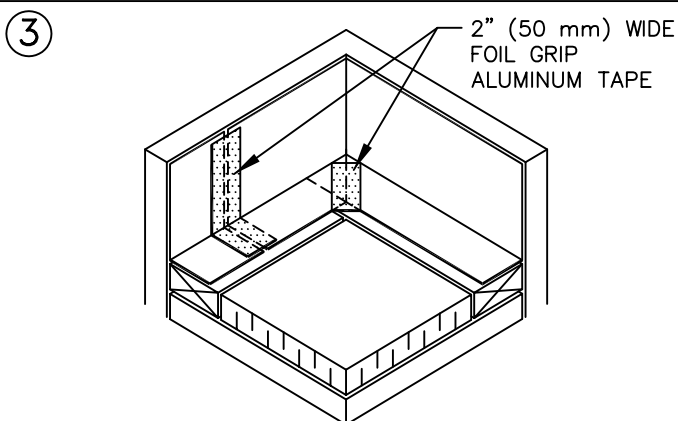


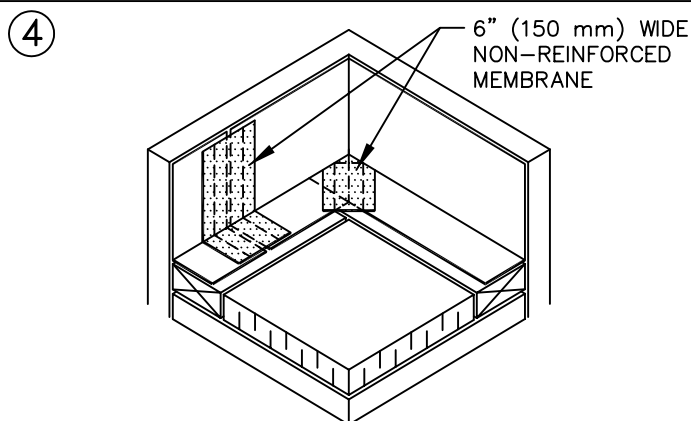
CREASE COATED METAL FLASHING ALONG DASHED LINES AFTER CUTTING AND REMOVING SHADED TRIANGLE.



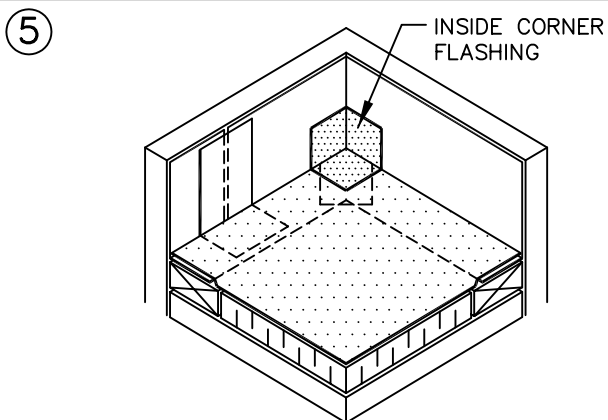
OVERLAP FLANGE AT CORNER AND FASTEN TO WOOD NAILERS USING 1-1/4" (32 mm) RING SHANK NAILS SPACED 6" (150 mm) O.C., STAGGERED 1/2" (13 mm).



INSTALL 2" (50 mm) WIDE FOIL GRIP ALUMINUM TAPE OVER VERTICAL JOINT IN COATED METAL AND OVER CUT EDGE AT CORNER AS SHOWN.



HEAT WELD 6" (150 mm) WIDE PIECE OF REINFORCED MEMBRANE OVER FOIL GRIP ALUMINUM TAPE.



INSTALL FIELD MEMBRANE AND HEAT WELD TO FLANGE OF COATED METAL. ALSO INSTALL INSIDE CORNER FLASHING PER WELDTITE UNIVERSAL 15A OR 15B DETAIL.

NOTE:

DUCT TAPE MAY BE SUBSTITUTED FOR FOIL GRIP ALUMINUM TAPE.

INSIDE CORNER WITH
COATED METAL WALL FLASHING

WELDTITE
UNIVERSAL – 15E