



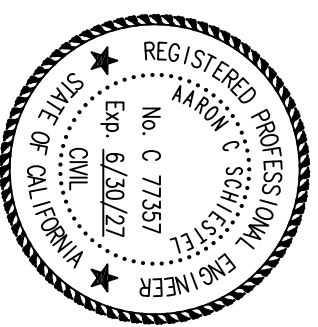
CITY OF PLACERVILLE MEASURE L PROJECT

STORM DRAIN REPLACEMENT UPPER BROADWAY & POINT VIEW DRIVE PROJECT NO. 42320

SUBMITTED BY:

A. Schiestel

AARON C SCHEISTEL, P.E. RCE:77357
SENIOR CIVIL ENGINEER
CITY OF PLACERVILLE



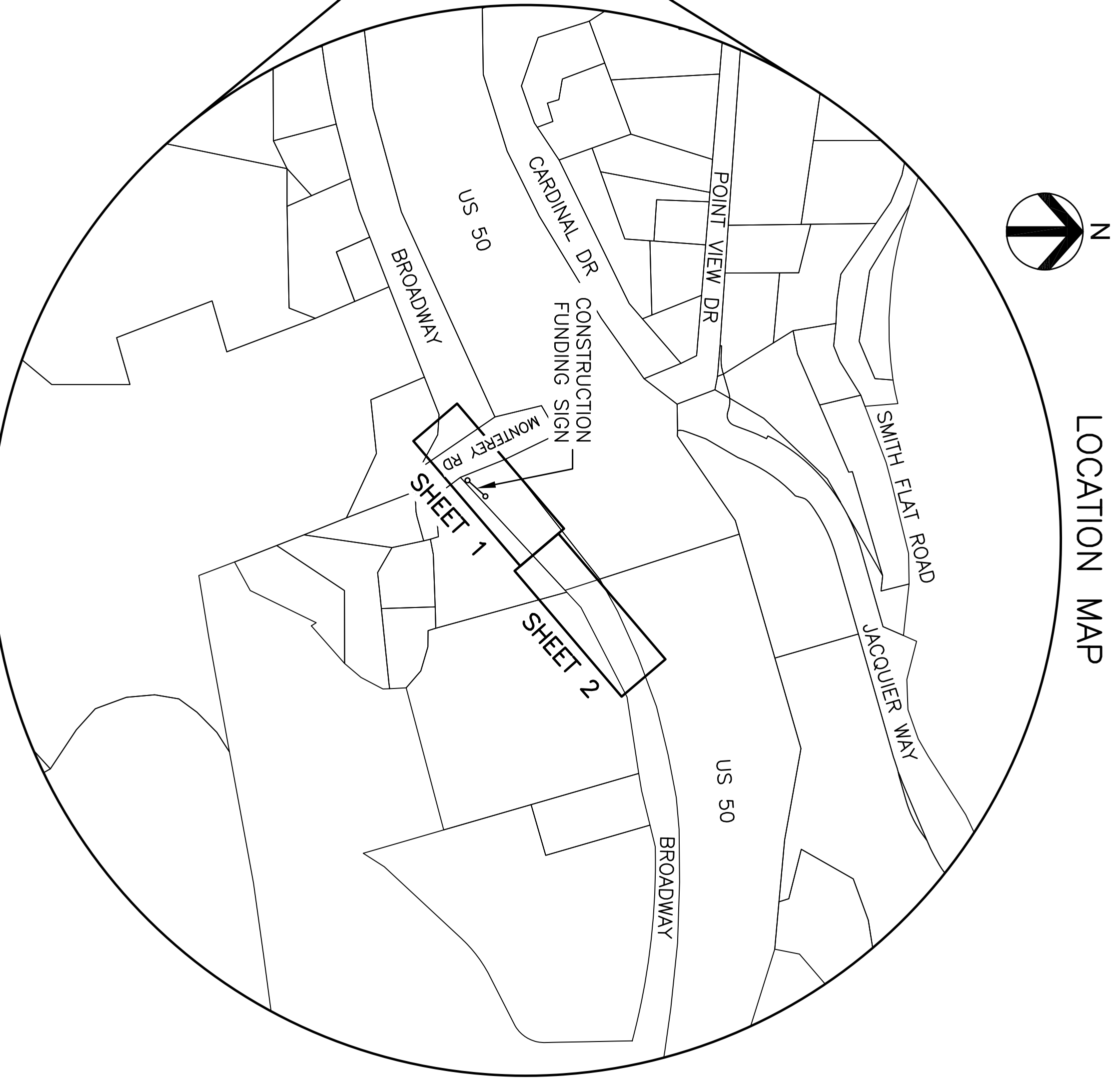
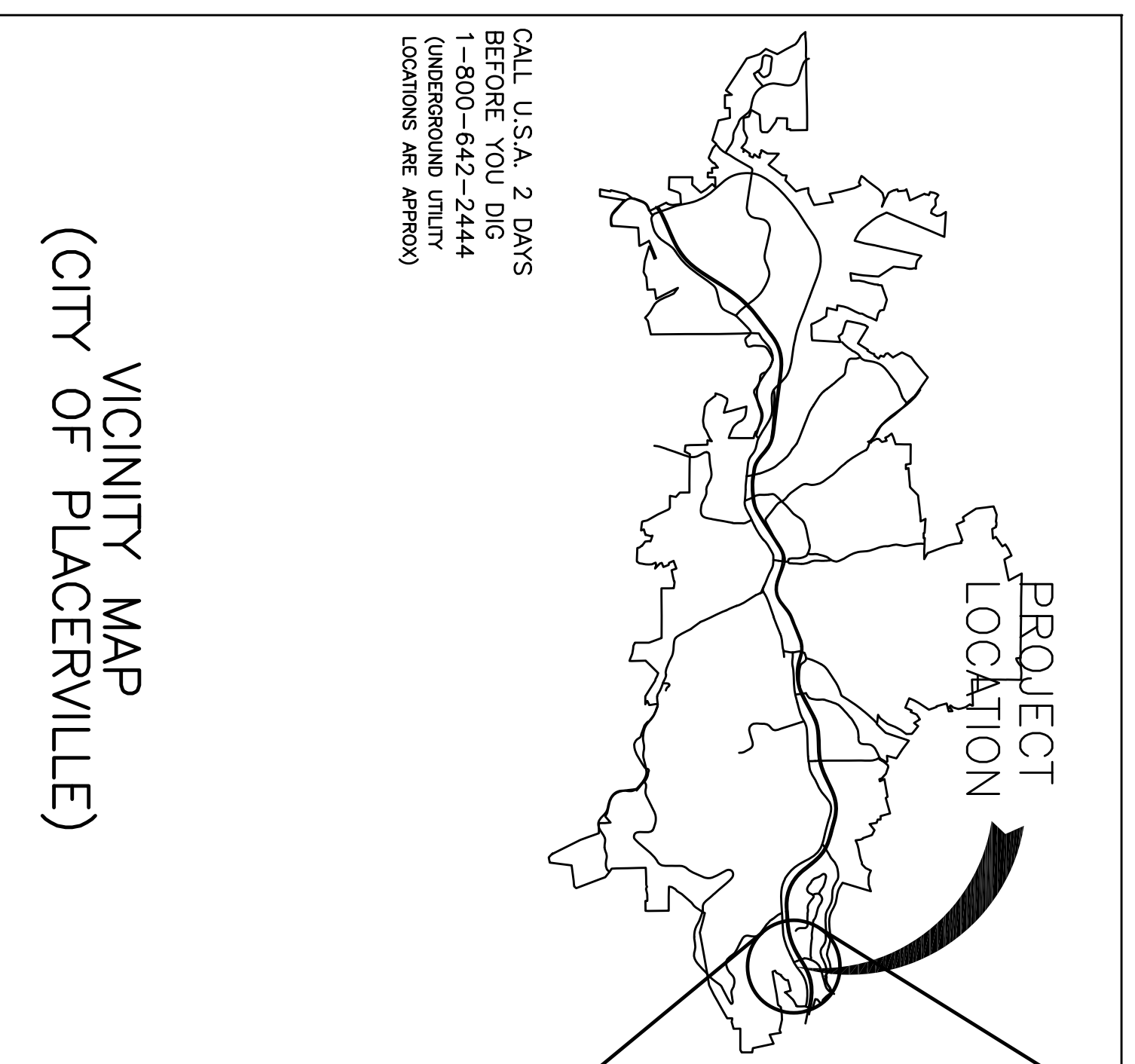
APPROVED BY:

Melissa Savage

MELISSA SAVAGE, P.E.
CITY ENGINEER
CITY OF PLACERVILLE

APRIL, 2026

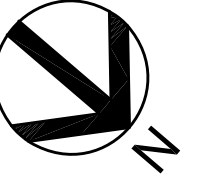
UTILITY REPRESENTATIVES		PHONE
UTILITY	REPRESENTATIVE	
SEWER/STORM: CITY OF PLACERVILLE	CORY SCHEISTEL	(530) 642-5250
WATER: EL DORADO IRRIGATION DISTRICT	PATRICK KALVASS	(530) 642-4054
TELEPHONE: AT&T	LEE NIETO	(916) 505-7308
ELECTRICITY: PG&E	JOSH BERGER	(209) 986-0184
CABLE T.V.: COMCAST	CAMERON ALVES	(916) 200-9060
FIRE: EL DORADO COUNTY FIRE	BRANDON MCKAY	(530) 644-9630



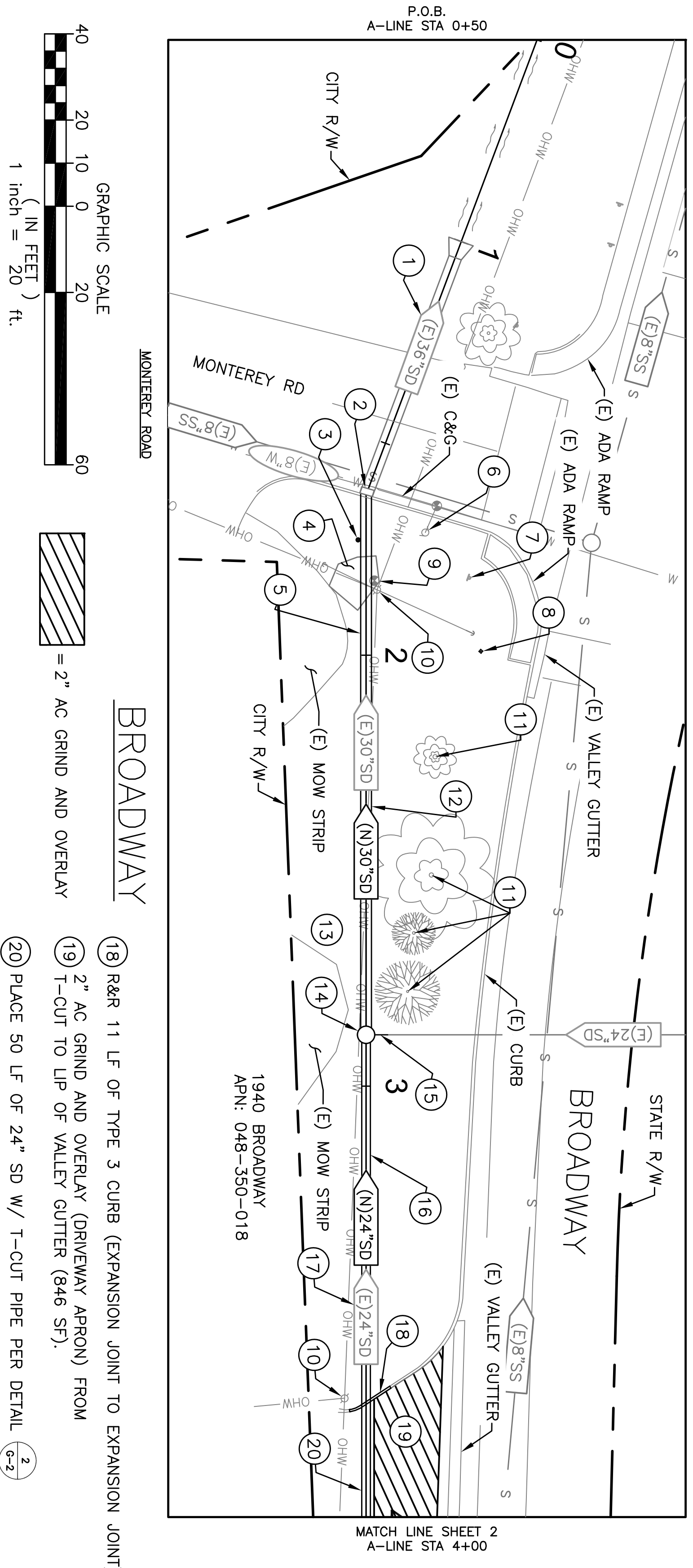
SCALE: 1" = 200'

DRAWING INDEX	
SHT NO.	DRAWING TITLE
1	G-1 TITLE SHEET AND DRAWING INDEX
2	G-2 SYMBOLS, ABBREVIATIONS, AND GENERAL NOTES
3	C-1 STORM DRAIN IMPROVEMENTS PLAN & PROFILE
4	C-2 STORM DRAIN IMPROVEMENTS PLAN & PROFILE

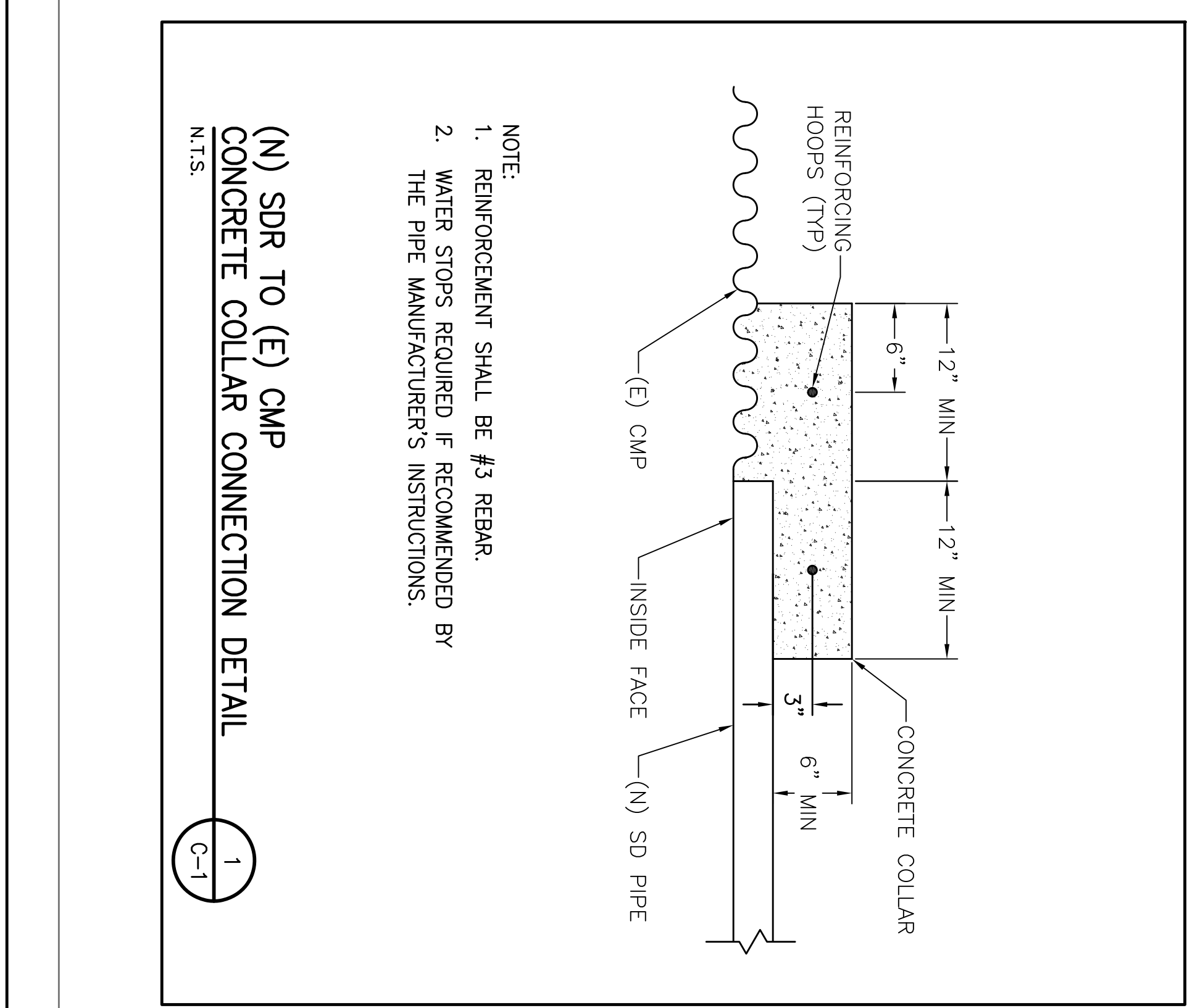
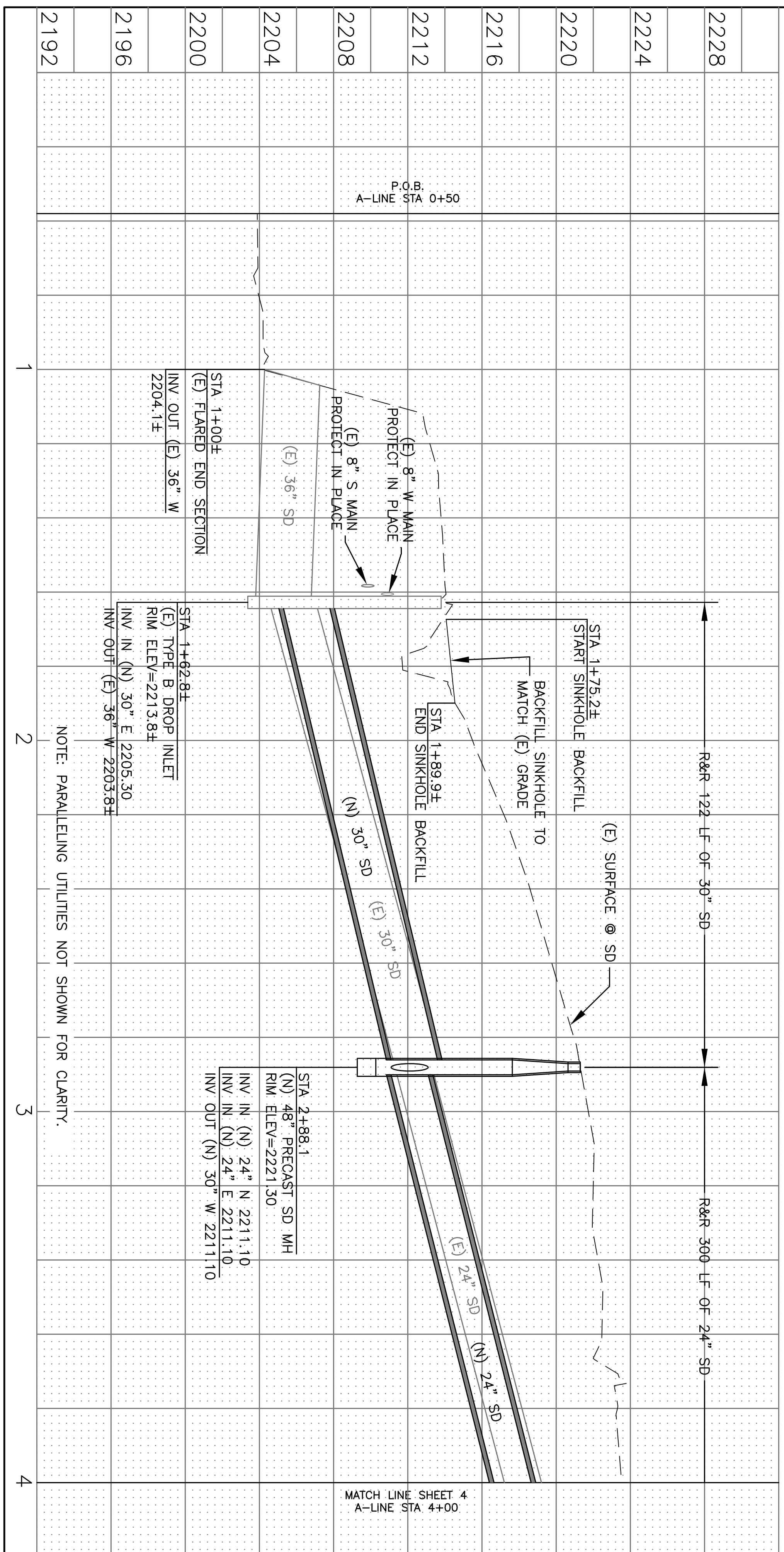
NO.	REVISIONS	APPROVAL BY	DATE



PRIOR TO CONSTRUCTION CONTRACTOR TO POT HOLE AND CONFIRM EXISTING SD DEPTHS




- ### KEYNOTES
- 1 CLEAR AND FLUSH COBBLES, SOIL AND DEBRIS FROM 62 LF OF (E) 36" SD PIPE.
 - 2 STA 1+62.8 - CONNECT (N) 30" SD TO (E) DI PER DETAIL (C-2)
 - 3 REPLACE (E) LANDSCAPE DRAIN AT LOW SPOT AND RECONNECT TO (E) DI.
 - 4 REMOVE UNSUITABLE MATERIAL AND BACKFILL SINKHOLE WITH CLEAN NATIVE MATERIAL PER SPEC SECTION 19. COMPACT TO 90% RELATIVE COMPACTION.
 - 5 REMOVE 122 LF 30" SD.
 - 6 PROTECT (E) FH IN PLACE.
 - 7 PROTECT (E) STOP SIGN IN PLACE.
 - 8 REMOVE ABANDONED TELEPHONE PEDESTAL AND FOUNDATION, BACKFILL TO GRADE WITH CLEAN NATIVE MATERIAL (90% RELATIVE COMPACTION) PER SECTION 19.
 - 9 RE-SET IRRIGATION VALVE AND VALVE BOX TO GRADE, AS NECESSARY.
 - 10 PROTECT (E) UTILITY POLE AND GUY IN PLACE. COORDINATE WITH TROY BARD (PG&E) @ (707)291-2654 TO STABILIZE POLE PRIOR TO ANY ADJACENT EXCAVATION WORK. PROVIDE PG&E 3 WEEKS NOTICE
 - 11 PROTECT (E) TREE IN PLACE.
 - 12 PLACE 30" SD PIPE PER DETAIL (C-2) (UNPAVED)
 - 13 RESTORE ALL LANDSCAPING AND IRRIGATION DISTURBED BY CONSTRUCTION ACTIVITIES TO PRE-CONSTN CONDITIONS PER SPEC SECTION 20. TEST PRE-CONSTN IRRIGATION SYSTEM OPERATION PRIOR TO STARTING WORK.
 - 14 STA 2+88.1 - INSTALL 48" PRECAST SD MH W/ 1' SUMP.
 - 15 R&R 5 LF OF 24" CMP (NORTH). COUPLE W/ CONC COLLAR PER DETAIL (C-1)
 - 16 REMOVE 112 LF 24" SD.
 - 17 PLACE 24" SD PIPE PER DETAIL (C-2) (UNPAVED)



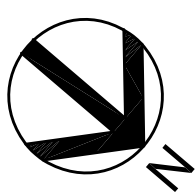
PLAN AND PROFILE
DRAWING
C-1
SHEET: 3 OF 4
SCALE
HORZ: 1" = 20'
VERT: 1" = 5'

PLANS FOR THE CONSTRUCTION OF
**STORM DRAIN REPLACEMENT
UPPER BROADWAY &
POINT VIEW**
STORM DRAIN REPLACEMENT
CITY OF PLACERVILLE

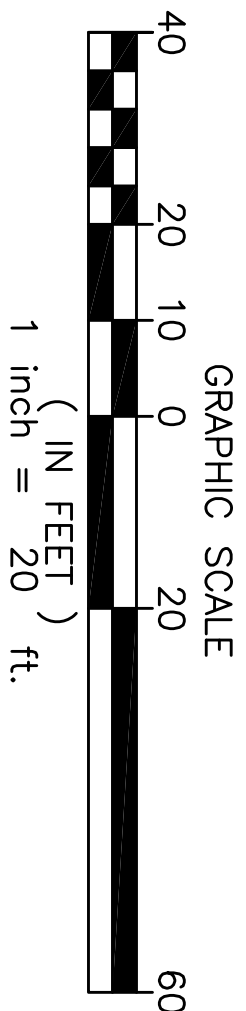
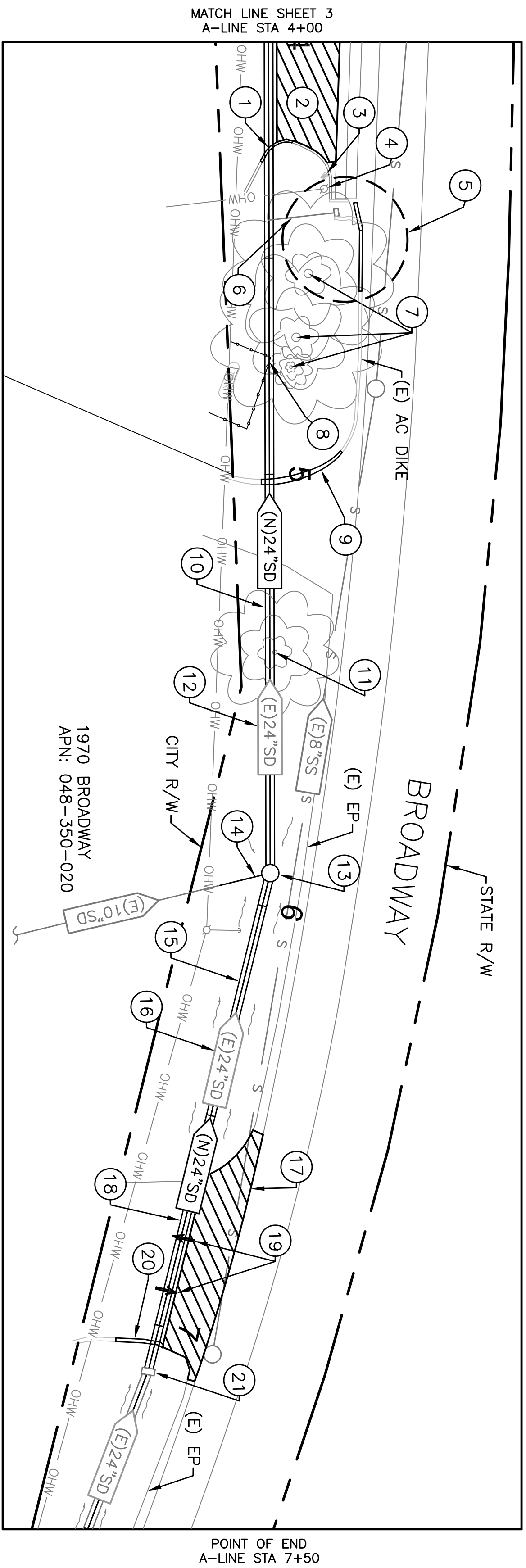

CITY OF PLACERVILLE
ENGINEERING DEPARTMENT
3101 CENTER STREET
PLACERVILLE, CA 95667
(530) 642-5250


4/27/26
DATE
PROJECT ENGINEER
A.C. SCHIESTEL

APPROVED	MELISSA SAVAGE	DATE	4/27/26	DATE	4/27/26
DESIGNED	C.S.	GRID NO.	N/A	CONTRACT NO.	42320
DRAWN	C.S.	FILE NO.	N/A		
NO. REVISIONS					
		APPROVAL			
		BY DATE			



PRIOR TO CONSTRUCTION
CONTRACTOR TO POT HOLE AND
CONFIRM EXISTING SD DEPTHS

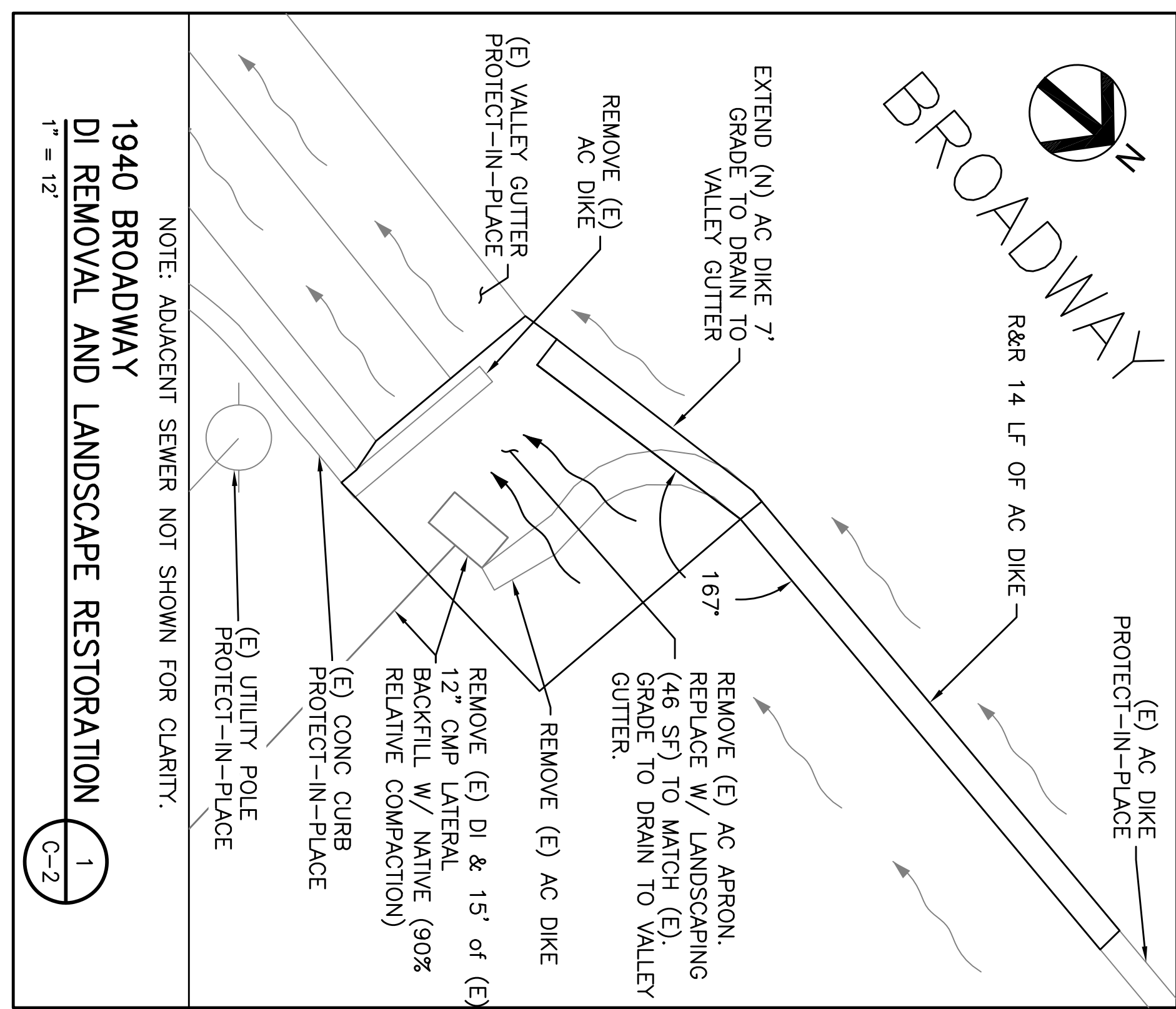
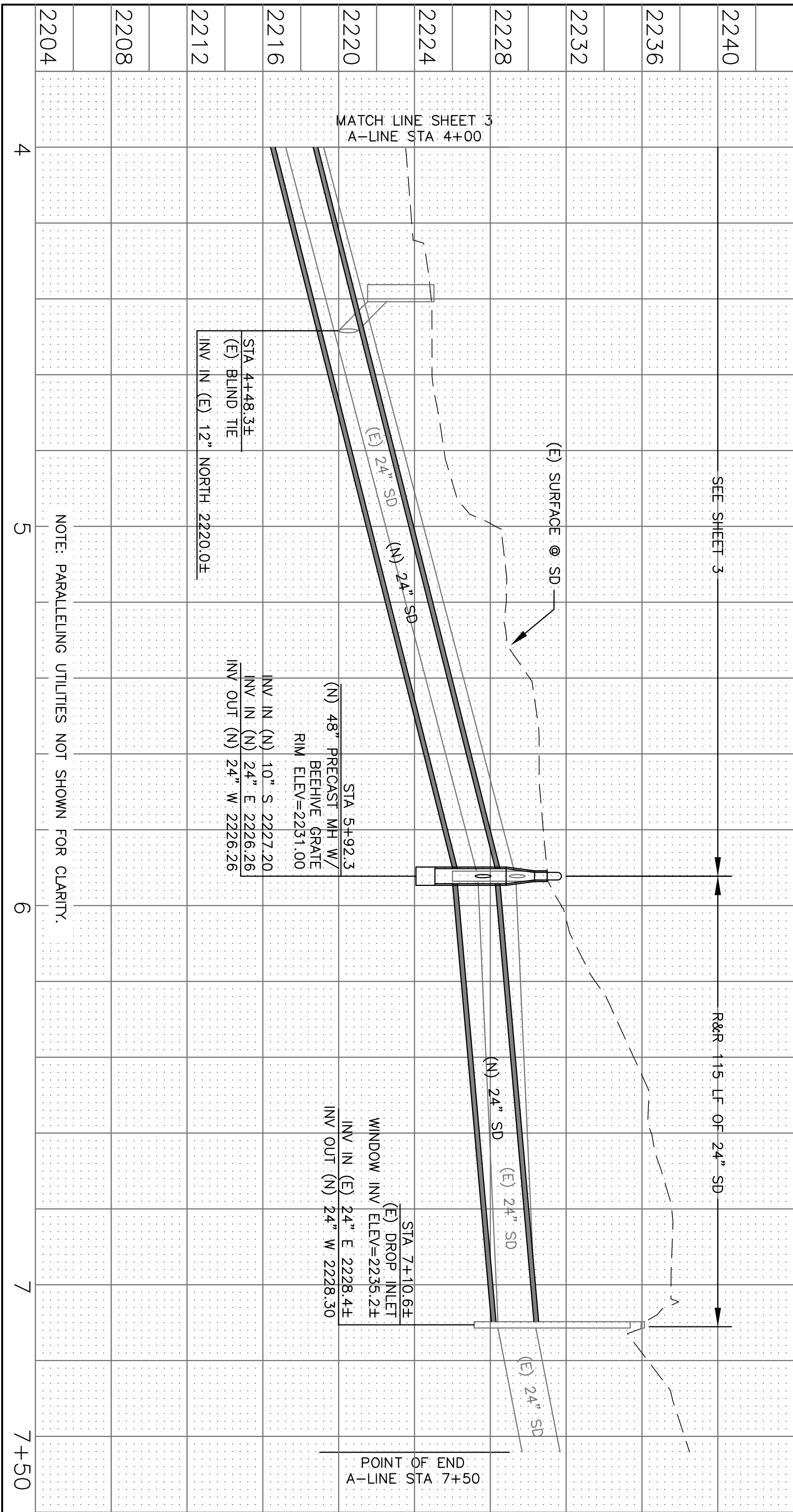


BROADWAY
= 2" AC GRIND AND OVERLAY

- 18) PLACE 40 LF OF 24" SD W/ T-CUT PIPE PER DETAIL (C-2)
- 19) REPLACE ENTRANCE/EXIT ARROW MARKERS.
- 20) R&R 20 LF OF (E) AC DIKE.
- 21) STA 7+10.9 - CONNECTION TO (E) DI PER DETAIL (C-2)

KEYNOTES

- 1) R&R 9 LF OF TYPE 3 CURB (EXPANSION JOINT TO EXPANSION JOINT)
- 2) 2" GRIND & OVERLAY, SEE SHEET 3.
- 3) PROTECT (E) MAIL BOX IN PLACE.
- 4) PROTECT UTILITY POLE IN PLACE.
- 5) REMOVE (E) DI, AC APRON, AND AC DIKE PER DETAIL (C-2)
- 6) REMOVE 15 LF OF (E) 12" CMP LATERAL. BACKFILL W/ CLEAN NATIVE MATERIAL (90% RELATIVE COMPACTION).
- 7) REMOVE PINE TREE AND STUMP.
- 8) DISASSEMBLE AND REASSEMBLE WOOD FENCE, AS NECESSARY. USE (N) PRESSURE TREATED 4X4S.
- 9) R&R 20 LF OF (E) AC DIKE.
- 10) PLACE 24" SD PIPE PER DETAIL (C-2) (UNPAVED)
- 11) REMOVE PINE TREE AND STUMP.
- 12) REMOVE 188 LF 24" SD
- 13) STA 5+92.3 - REMOVE (E) SD INLET. INSTALL (N) 48" PRECAST SD MH W/ 1' SUMP AND BEEHIVE GRATE PER SPEC SECTION 75-9. FINAL GRADE TO DRAIN TO (N) BEEHIVE GRATE
- 14) R&R 10 LF OF 10" SD (SOUTH). COUPLE W/ SHIELDED FERROCO.
- 15) PLACE 24" SD PIPE PER DETAIL (C-2) (UNPAVED)
- 16) REMOVE 115 LF 24" SD
- 17) 2" AC GRIND & OVERLAY (DRIVEWAY APRON) FROM T-CUT TO FOG LINE (523 SF).



PLAN AND PROFILE
DRAWING
C-2
SHEET: 4 OF 4
SCALE
HORZ: 1" = 20'
VERT: 1" = 5'

PLANS FOR THE CONSTRUCTION OF
**STORM DRAIN REPLACEMENT
UPPER BROADWAY &
POINT VIEW**
STORM MAIN REPLACEMENT
CITY OF PLACERVILLE



APPROVED: *Melissa Savage*
DESIGNED: C.S.
DRAWN: C.S.
PROJECT ENGINEER
A.C. SCHIESTEL

APPROVED	MELISSA SAVAGE	DATE	4/27/26	DATE	4/27/26
DESIGNED	C.S.	GRID NO.	N/A	CONTRACT NO.	42320
DRAWN	C.S.	FILE NO.	N/A		
NO. REVISIONS		APPROVAL		DATE	