



CITY OF PLACERVILLE MEASURE L PROJECT

STORM DRAIN REPLACEMENT UPPER BROADWAY & POINT VIEW DRIVE PROJECT NO. 42320

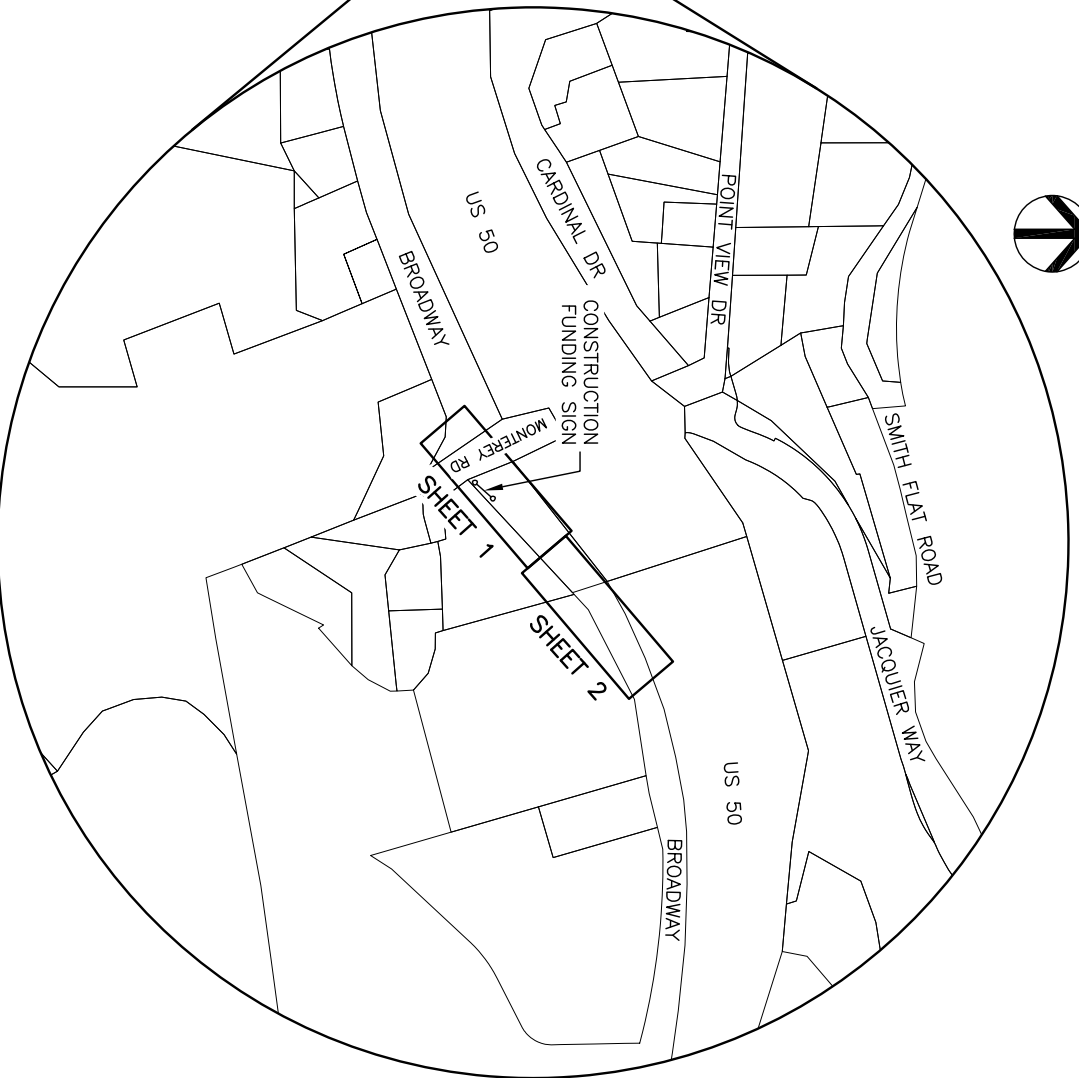
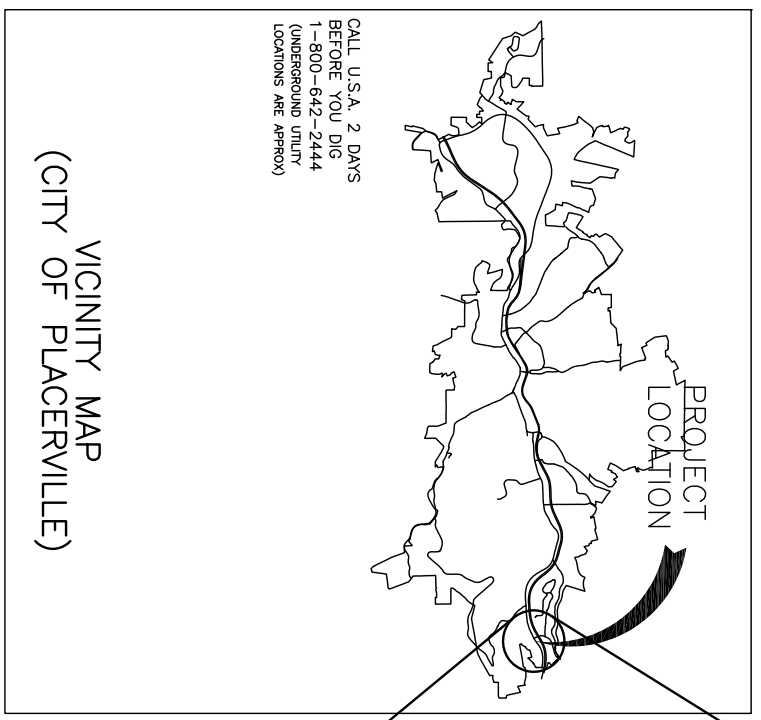
SUBMITTED BY:
A. Schiestel
AARON C SCHIESTEL, P.E. ROE:77357
SENIOR CIVIL ENGINEER
CITY OF PLACERVILLE



APPROVED BY:
Melissa Savage
MELISSA SAVAGE, P.E.
CITY ENGINEER
CITY OF PLACERVILLE

APRIL, 2026

UTILITY REPRESENTATIVES		PHONE
SEWER/STORM: CITY OF PLACERVILLE	REPRESENTATIVE	(530) 642-5250
WATER: EL DORADO IRRIGATION DISTRICT	CORY SCHIESTEL	(530) 642-4054
TELEPHONE: AT&T	PATRICK KALVASS	(916) 505-7308
ELECTRICITY: PG&E	LEE NIETO	(209) 986-0184
CABLE T.V.: COMCAST	JOSH BERGER	(916) 200-9060
FIRE: EL DORADO COUNTY FIRE	CAMERON ALVES	(530) 644-9630
	BRANDON MCKAY	



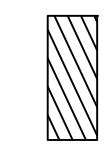
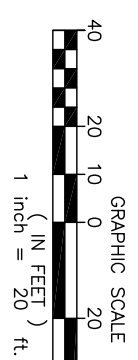
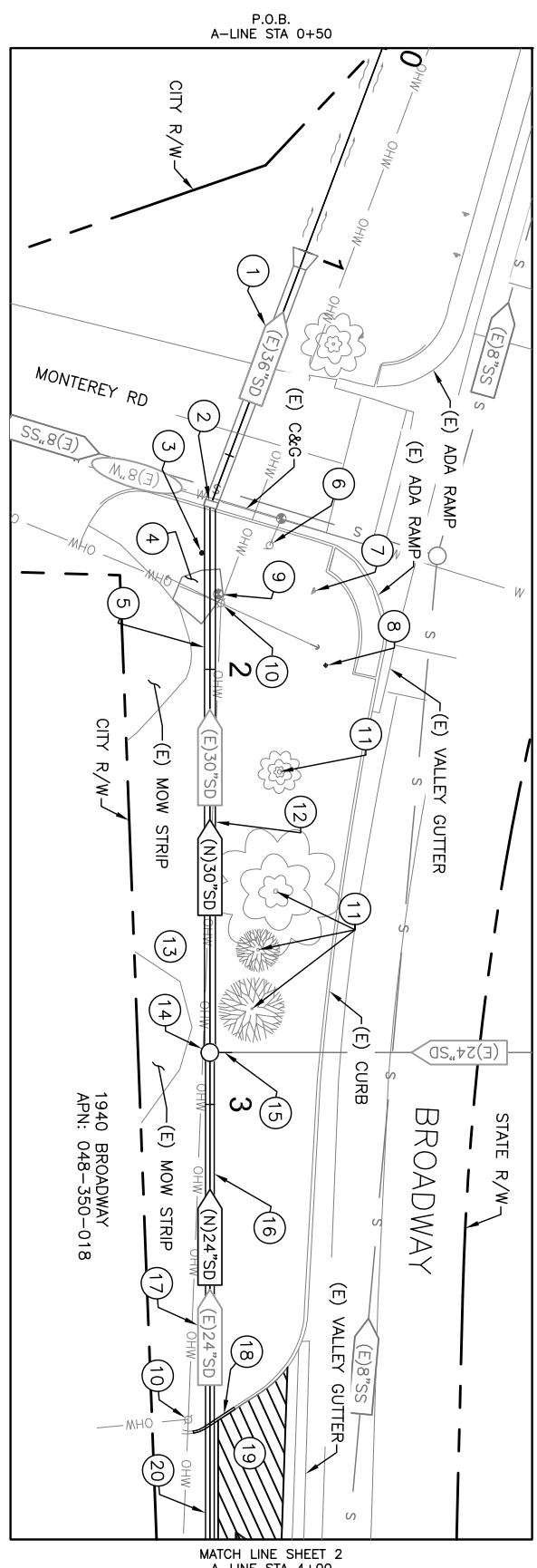
SCALE: 1" = 200'

DRAWING INDEX	
SHT NO.	DRAWING TITLE
1	G-1 TITLE SHEET AND DRAWING INDEX
2	G-2 SYMBOLS, ABBREVIATIONS, AND GENERAL NOTES
3	C-1 STORM DRAIN IMPROVEMENTS PLAN & PROFILE
4	C-2 STORM DRAIN IMPROVEMENTS PLAN & PROFILE

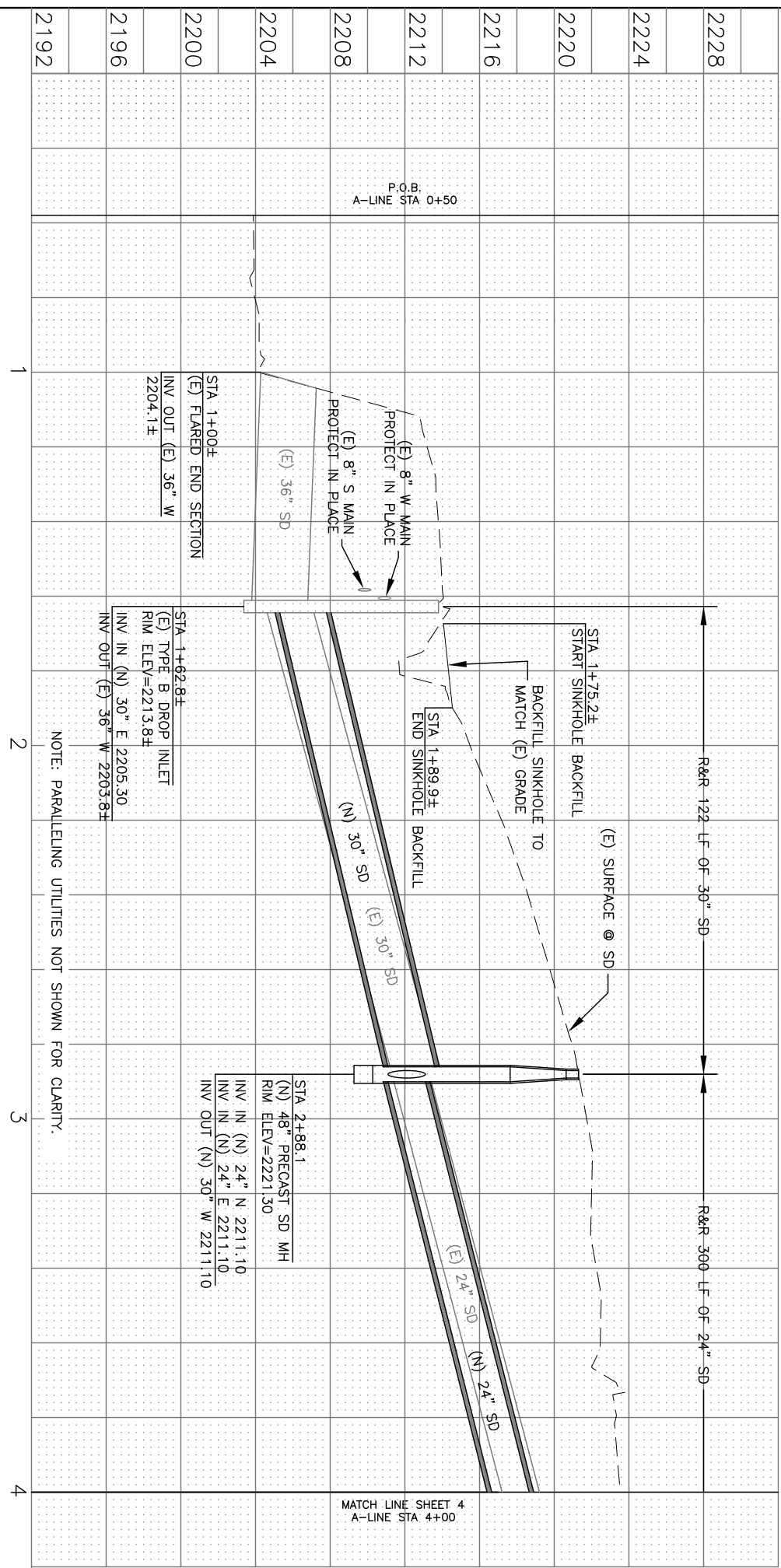
NO. REVISIONS		APPROVAL	
NO.	DATE	BY	DATE



PRIOR TO CONSTRUCTION CONTRACTOR TO POTHOLE AND CONFIRM EXISTING SD DEPTHS



- (18) R&R 11 LF OF TYPE 3 CURB (EXPANSION JOINT TO EXPANSION JOINT).
- (19) T-CUT TO LP OF VALLEY GUTTER (846 SF).
- (20) PLACE 50 LF OF 24" SD W/ T-CUT PIPE PER DETAIL (C-2)



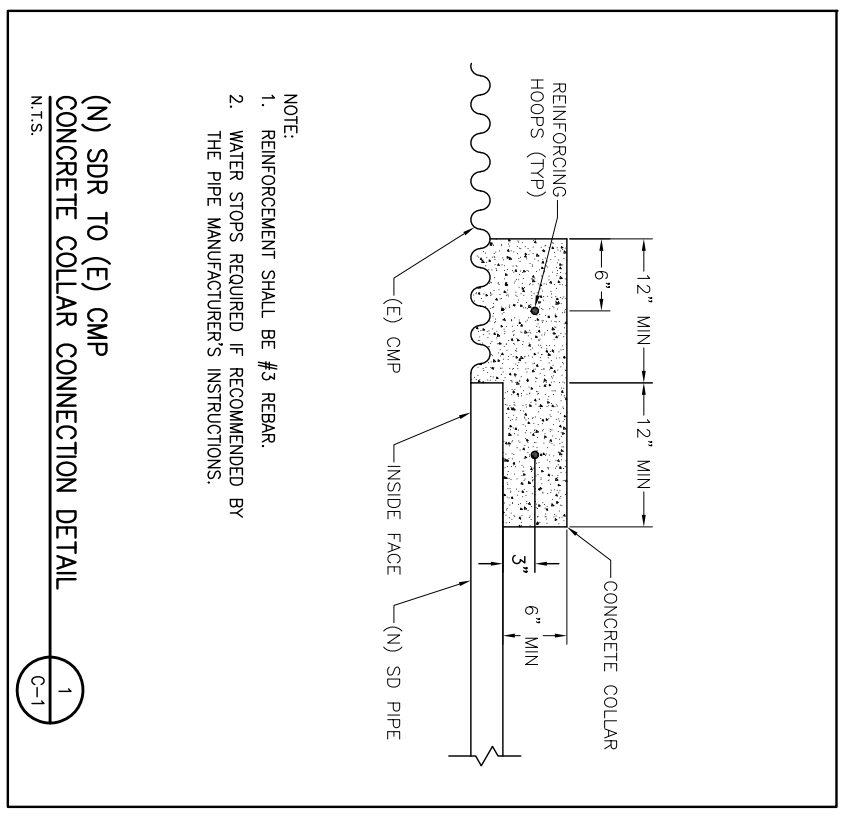
NOTE: PARALLELING UTILITIES NOT SHOWN FOR CLARITY.

KEYNOTES

- (1) CLEAR AND FLUSH COBBLES, SOIL AND DEBRIS FROM 62 LF OF (E) 36" SD PIPE.
- (2) STA 1+62.8 - CONNECT (N) 30" SD TO (E) DI PER DETAIL (C-1)
- (3) REPLACE (E) LANDSCAPE DRAIN AT LOW SPOT AND RECONNECT TO (E) DI.
- (4) REMOVE UNSUITABLE MATERIAL AND BACKFILL SINKHOLE WITH CLEAN NATIVE MATERIAL PER SPEC SECTION 19. COMPACT TO 90% RELATIVE COMPACTION.
- (5) REMOVE 122 LF 30" SD.
- (6) PROTECT (E) FH IN PLACE.
- (7) PROTECT (E) STOP SIGN IN PLACE.
- (8) REMOVE ABANDONED TELEPHONE PEDESTAL AND FOUNDATION, BACKFILL TO GRADE WITH CLEAN NATIVE MATERIAL (90% RELATIVE COMPACTION) PER SECTION 19.
- (9) RE-SET IRRIGATION VALVE AND VALVE BOX TO GRADE, AS NECESSARY.
- (10) PROTECT (E) UTILITY POLE AND GUY IN PLACE. COORDINATE WITH TROY BARD (PG&E) @ (707)291-2654 TO STABILIZE POLE PRIOR TO ANY ADJACENT EXCAVATION WORK. PROVIDE PG&E 3 WEEKS NOTICE
- (11) PROTECT (E) TREE IN PLACE.
- (12) PLACE 30" SD PIPE PER DETAIL (C-2) (UNPAVED)
- (13) RESTORE ALL LANDSCAPING AND IRRIGATION DISTURBED BY CONSTRUCTION
- (14) STA 2+88.1 - INSTALL 48" PRECAST SD MH W/ 1' SWMP.
- (15) R&R 5 LF OF 24" CMP (NORTH). COUPLE W/ CONC COLLAR PER DETAIL (C-1)
- (16) REMOVE 112 LF 24" SD.
- (17) PLACE 24" SD PIPE PER DETAIL (C-2) (UNPAVED)

MATCH LINE SHEET 4
A-LINE STA 4+00

MATCH LINE SHEET 2
A-LINE STA 4+00

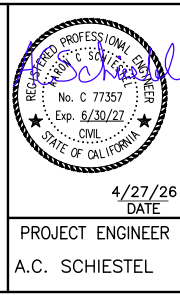


- NOTE:
- 1. REINFORCEMENT SHALL BE #3 REBAR.
 - 2. WATER STOPS REQUIRED IF RECOMMENDED BY THE PIPE MANUFACTURER'S INSTRUCTIONS.

(N) SDR TO (E) CMP
CONCRETE COLLAR CONNECTION DETAIL
C-1

PLAN AND PROFILE
DRAWING
C-1
SHEET: 3 OF 4
SCALE
HORIZ: 1" = 20'
VERT: 1" = 5'

PLANS FOR THE CONSTRUCTION OF
**STORM DRAIN REPLACEMENT
UPPER BROADWAY &
POINT VIEW**
STORM DRAIN REPLACEMENT
CITY OF PLACERVILLE



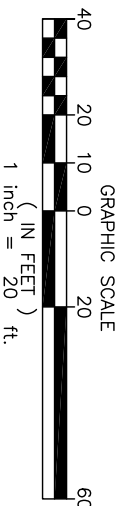
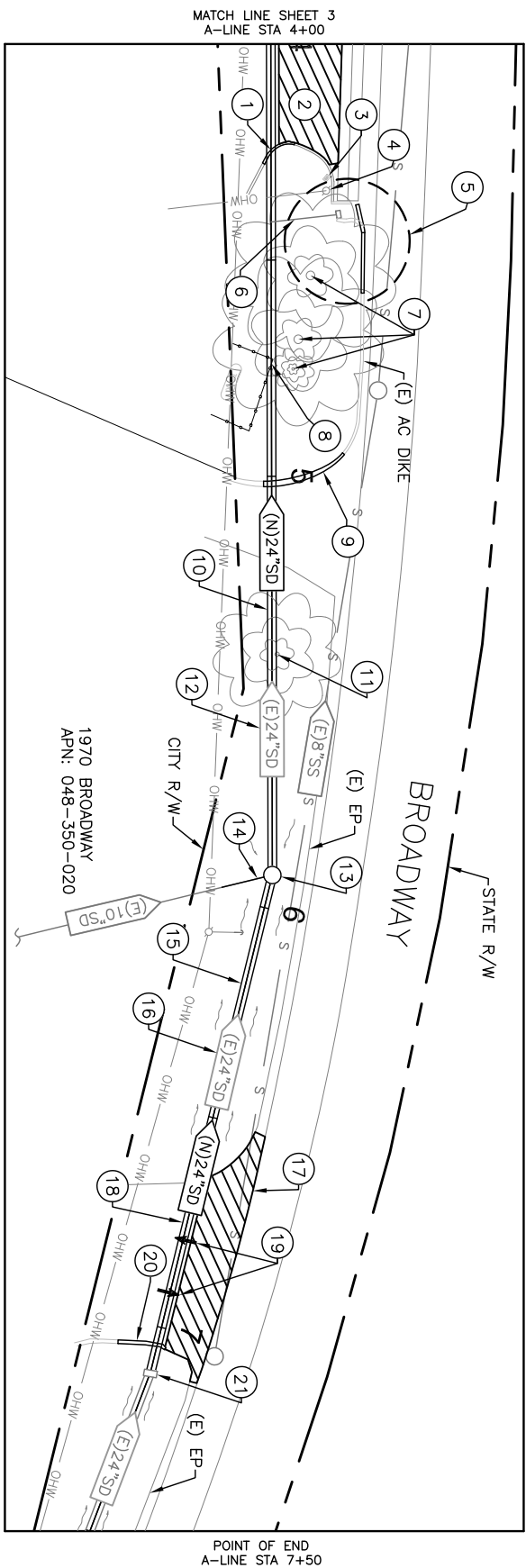
APPROVED	MELISSA SAVAGE	DATE	4/27/26	DATE	4/27/26
DESIGNED	C.S.	CONTRACT NO.	42320	GRID NO.	N/A
DRAWN	C.S.	FILE NO.	N/A		
NO.	REVISIONS			APPROVAL BY	DATE



PRIOR TO CONSTRUCTION CONTRACTOR TO POT HOLE AND CONFIRM EXISTING SD DEPTHS

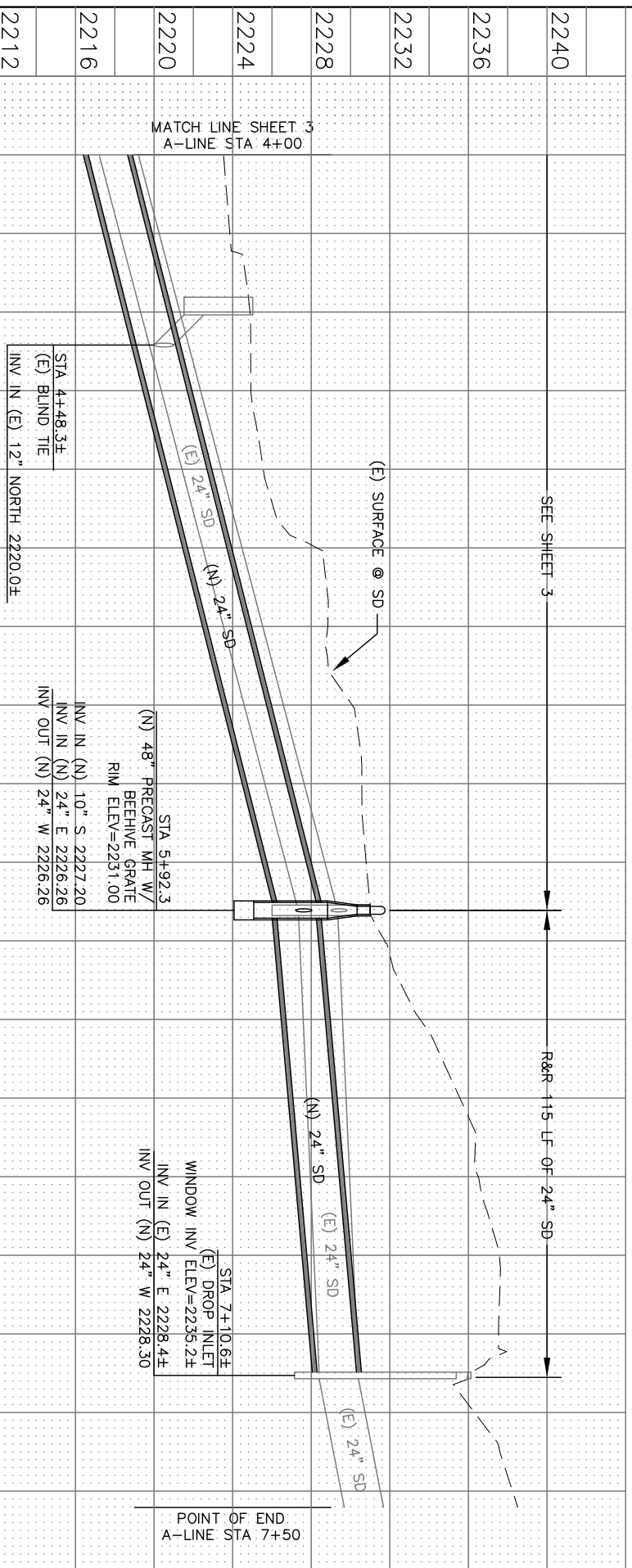
KEYNOTES

- 1 R&R 9 LF OF TYPE 3 CURB (EXPANSION JOINT TO EXPANSION JOINT)
- 2 2" GRIND & OVERLAY, SEE SHEET 3.
- 3 PROTECT (E) MAIL BOX IN PLACE.
- 4 PROTECT UTILITY POLE IN PLACE.
- 5 REMOVE (E) DI, AC APRON, AND AC DIKE PER DETAIL (C-2)
- 6 REMOVE 15 LF OF (E) 12" CMP LATERAL BACKFILL W/ CLEAN NATIVE MATERIAL (90% RELATIVE COMPACTION).
- 7 REMOVE PINE TREE AND STUMP.
- 8 DISASSEMBLE AND REASSEMBLE WOOD FENCE, AS NECESSARY. USE (N) PRESSURE TREATED 4X4s.
- 9 R&R 20 LF OF (E) AC DIKE.
- 10 PLACE 24" SD PIPE PER DETAIL (C-2) (UNPAVED)
- 11 REMOVE PINE TREE AND STUMP.
- 12 REMOVE 188 LF 24" SD
- 13 STA 5+92.3 - REMOVE (E) SD INLET. INSTALL (N) 48" PRECAST SD MH W/ 1' SUMP AND BEEHIVE GRATE PER SPEC SECTION 75-9. FINAL GRADE TO DRAIN TO (N) BEEHIVE GRATE
- 14 R&R 10 LF OF 10" SD (SOUTH). COUPLE W/ SHIELDED FERROCO.
- 15 PLACE 24" SD PIPE PER DETAIL (C-2) (UNPAVED)
- 16 REMOVE 115 LF 24" SD
- 17 2" AC GRIND & OVERLAY (DRIVEWAY APRON) FROM T-CUT TO FOG LINE (523 SF).

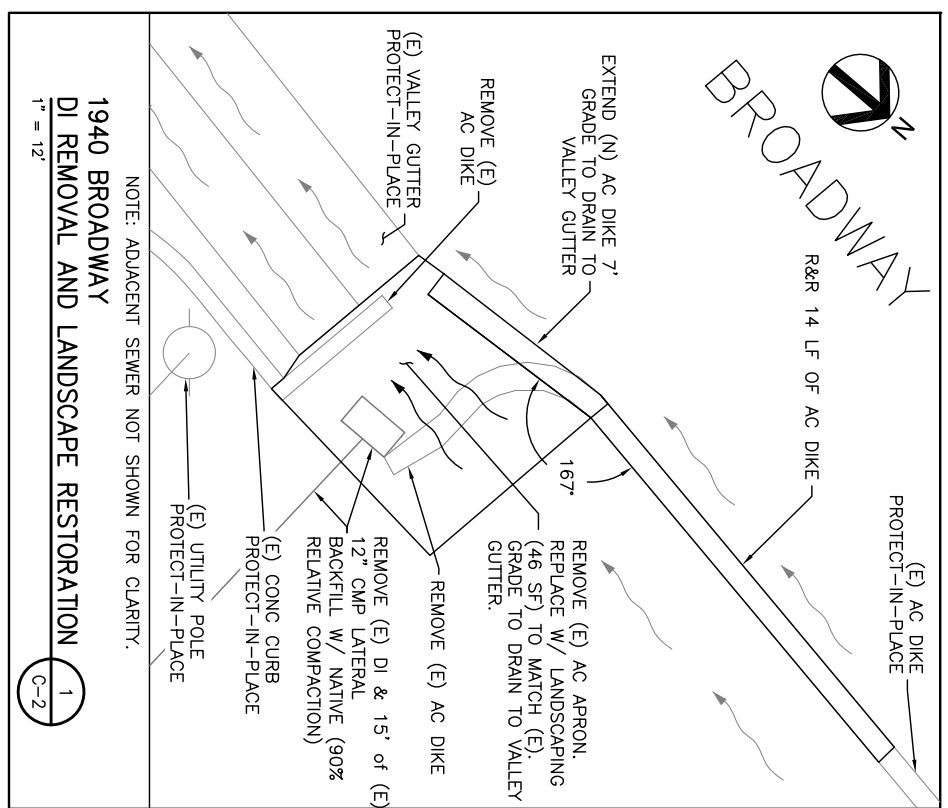


BROADWAY
= 2" AC GRIND AND OVERLAY

- 18 PLACE 40 LF OF 24" SD W/ T-CUT PIPE PER DETAIL (C-2)
- 19 REPLACE ENTRANCE/EXIT ARROW MARKERS.
- 20 R&R 20 LF OF (E) AC DIKE.
- 21 STA 7+10.9 - CONNECTION TO (E) DI PER DETAIL (C-2)

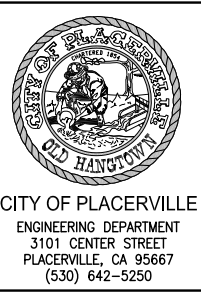


NOTE: PARALLELING UTILITIES NOT SHOWN FOR CLARITY.



PLAN AND PROFILE
DRAWING
C-2
SHEET: 4 OF 4
SCALE
HORZ: 1" = 20'
VERT: 1" = 5'

PLANS FOR THE CONSTRUCTION OF
**STORM DRAIN REPLACEMENT
UPPER BROADWAY &
POINT VIEW**
STORM MAIN REPLACEMENT
CITY OF PLACERVILLE



PROFESSIONAL ENGINEER
No. C 77357
Exp. 6/30/27
CIVIL
STATE OF CALIFORNIA
4/27/26
DATE
PROJECT ENGINEER
A.C. SCHIESTEL

APPROVED	MELISSA SAVAGE	DATE	4/27/26	DATE	4/27/26
DESIGNED	C.S.	GRID NO.	N/A	CONTRACT NO.	42320
DRAWN	C.S.	FILE NO.	N/A		
NO. REVISIONS		APPROVAL		DATE	