

SITE PLAN
SCALE: 1/32" = 1'-0"



EXISTING SITE

DESCRIPTION OF EXISTING SIGNS:

TYPE	SIGN COPY	AREA
Monument sign	Price/ID	43.08 sq. ft.
Canopy sign	Shell Letters	14.44 sq. ft.
Canopy sign	Shell Letters	14.44 sq. ft.
Canopy sign	Shell Letters	14.44 sq. ft.
Building sign	Food Mart	36.00 sq. ft.
Building sign	Car Wash	6.10 sq. ft.
Building sign	Car Wash	2.68 sq. ft.
Building sign	Car Wash	3.85 sq. ft.

DESCRIPTION OF PROPOSED SIGNS:

TYPE	SIGN COPY	AREA
Monument sign	Price/ID	43.08 sq. ft.
Canopy sign	Kwik Serv	13.31 sq. ft.
Canopy sign	Kwik Serv	13.31 sq. ft.
Building sign	Food Mart	24.36 sq. ft.
Building sign	Car Wash Vinyl	6.10 sq. ft.
Building sign	Enter Vinyl	3.85 sq. ft.
Building sign	Exit Vinyl	2.68 sq. ft.

RECEIVED
OCT 28 2020
CITY OF PLACERVILLE
DEVELOPMENT SERVICES DEPT



Sign Development Inc.

License #576277

Upland, CA 91786 (909) 920-5535

PROPRIETARY INFORMATION. The information disclosed in this document, including all drawings, designs and related materials, is the valuable and proprietary information of Sign Development Inc. It is provided solely for the purpose of evaluation for purchase and, without the express written authorization of Sign Development Inc., may not be disclosed or duplicated, in whole or in part, for any reason. Sign Development Inc. expressly reserves all patent, copyright and other proprietary rights to this document, including all design, manufacturing, reproduction, use, and sales rights thereto. © 2011 SIGN DEVELOPMENT INC.

CUSTOMER APPROVAL

SIGN AND PRINT FULL NAME

DATE

NO. W9230

PAGE: 1 OF 7

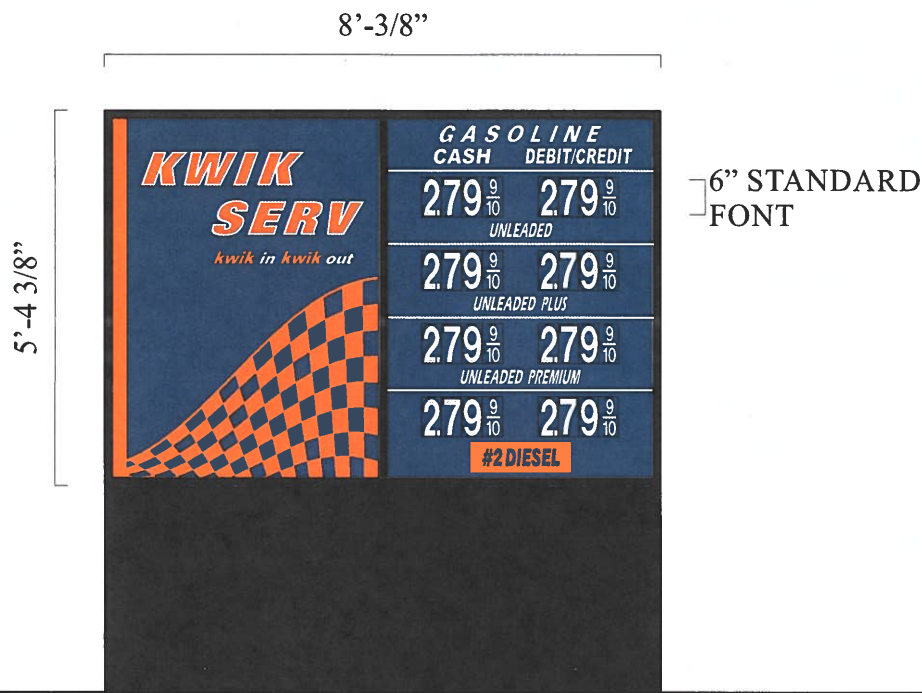
DATE: 09.23.20SM

REV: 10.12.20SM 10.23.20SM



150 PLACERVILLE DR.
PLACERVILLE, CA 95667

10.12.20SM - REVISED MID TO SHOW STANDARD FONTS,
CITY DOES NOT ALLOW LEDs.



PAINT EXISTING CABINETS, RETAINERS
AND BASE STRUCTURE GLOSS BLACK

- ① RELAMP CABINET AND TEST.
REFACE EXISTING D/F PRICE/ID SIGN.
43.08 sq.ft. VERIFY

SCALE: 3/8"= 1'-0"

INSTALL NEW 25 AMP PHOTO CELL
TO CONTROL ALL BACKLIGHTING.



EXISTING D/F PRICE/ID SIGN



Sign Development Inc.

License #576277

Upland, CA 91786 (909) 920-5535

PROPRIETARY INFORMATION. The information disclosed in this document, including all drawings, designs and related materials, is the valuable and proprietary information of Sign Development Inc. It is provided solely for the purpose of evaluation for purchase and, without the express written authorization of Sign Development Inc., may not be disclosed or duplicated, in whole or in part, for any reason. Sign Development Inc. expressly reserves all patent, copyright and other proprietary rights to this document, including all design, manufacturing, reproduction, use, and sales rights thereto. © 2011 SIGN DEVELOPMENT INC.

CUSTOMER APPROVAL

SIGN AND PRINT FULL NAME

DATE

NO. W9230

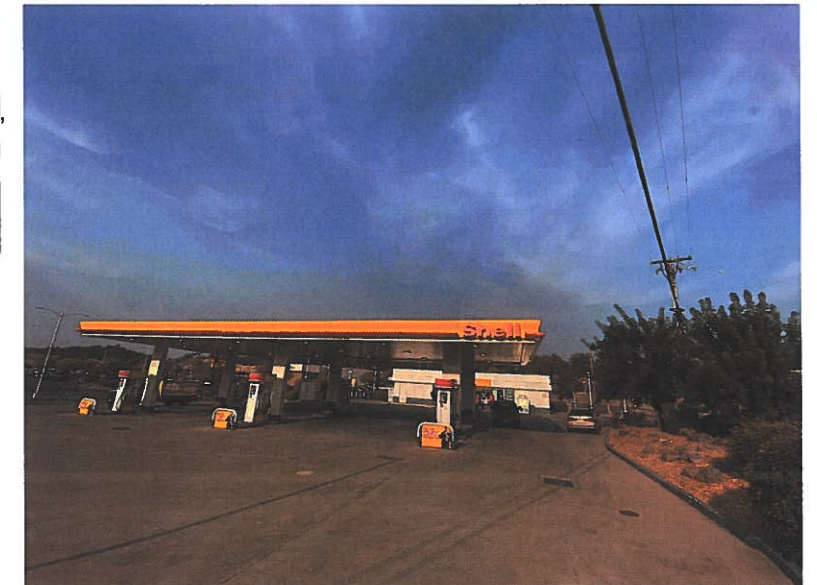
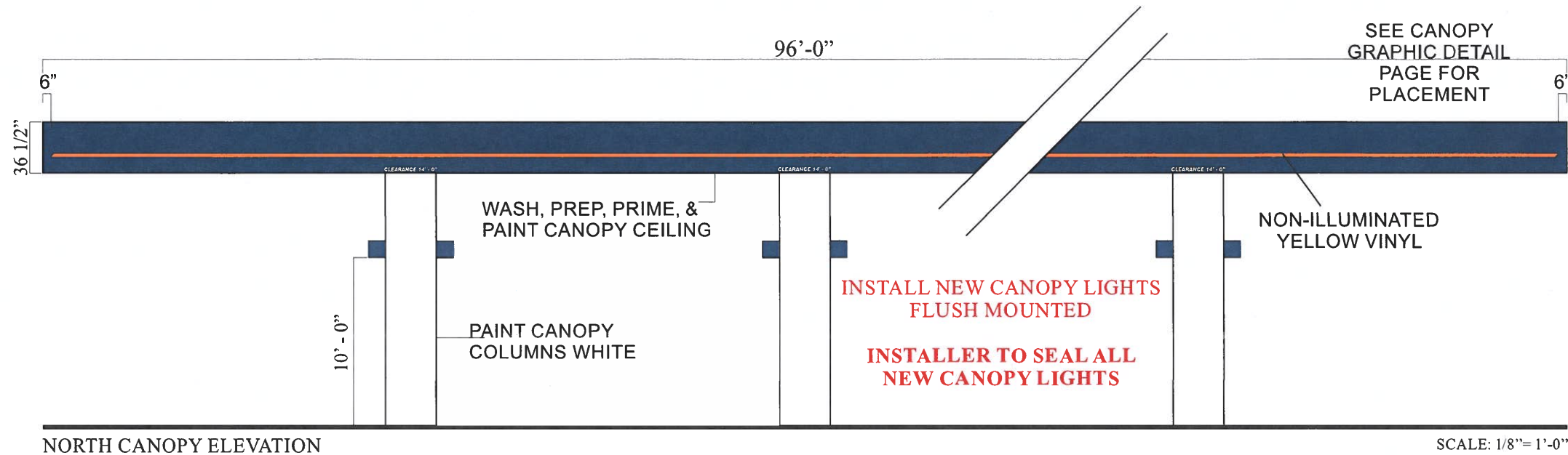
PAGE: 2 OF 7

DATE: 09.23.20SM

REV: 10.12.20SM 10.23.20SM



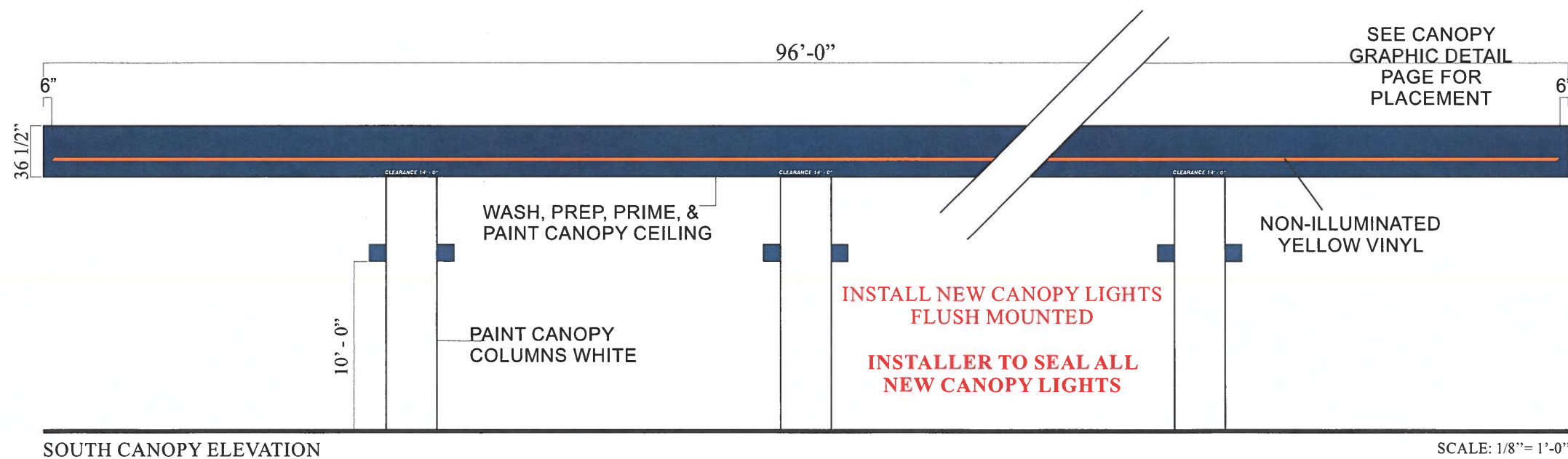
150 PLACERVILLE DR.
PLACERVILLE, CA 95667



EXISTING SOUTH CANOPY ELEVATION

PAINT CANOPY COLUMNS WHITE.
 PAINT ALL BUMPER POLES KWIK SERV BLUE.
 PAINT ISLAND CURBS (FACES ONLY) GLOSS BLACK.
 PAINT FILL TANK LIDS.
 INSTALL NEW TRASH CADDIES
 INSTALL TANK TAGS.

PAINT FILL TANK LIDS
 UNLEADED = WHITE
 UNLEADED PLUS = BLUE
 UNLEADED PREMIUM = RED
 DIESEL #2 = GREEN



Sign Development Inc.

License #576277

Upland, CA 91786 (909) 920-5535

PROPRIETARY INFORMATION. The information disclosed in this document, including all drawings, designs and related materials, is the valuable and proprietary information of Sign Development Inc. It is provided solely for the purpose of evaluation for purchase and, without the express written authorization of Sign Development Inc., may not be disclosed or duplicated, in whole or in part, for any reason. Sign Development Inc. expressly reserves all patent, copyright and other proprietary rights to this document, including all design, manufacturing, reproduction, use, and sales rights thereto. © 2011 SIGN DEVELOPMENT INC.

CUSTOMER APPROVAL

SIGN AND PRINT FULL NAME

DATE

NO. W9230

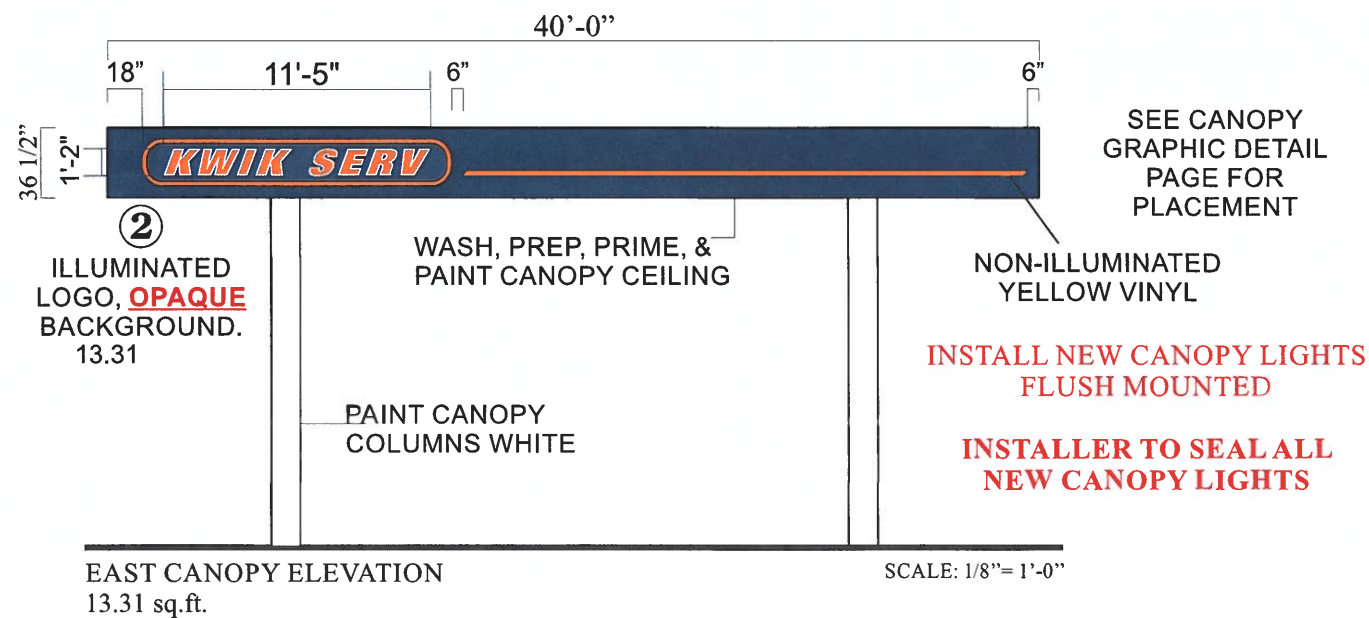
PAGE: 3 OF 7

DATE: 09.23.20SM

REV: 10.12.20SM 10.23.20SM

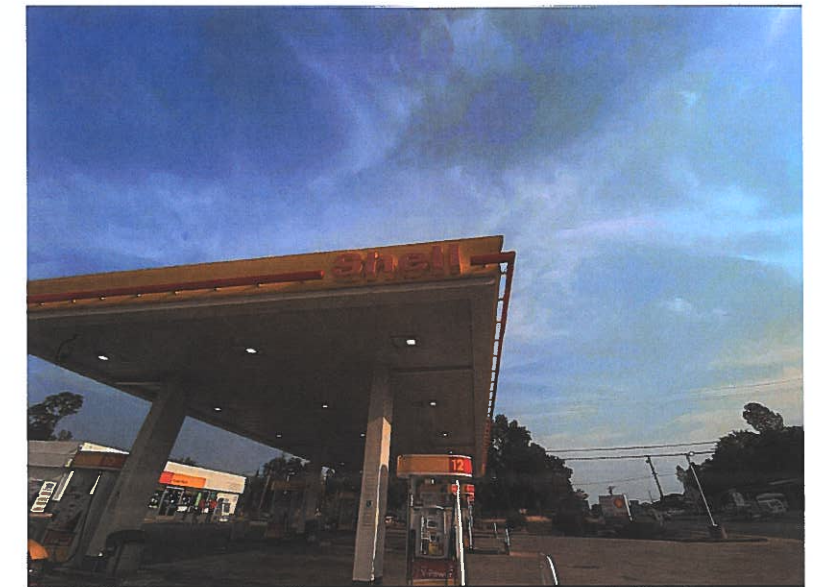
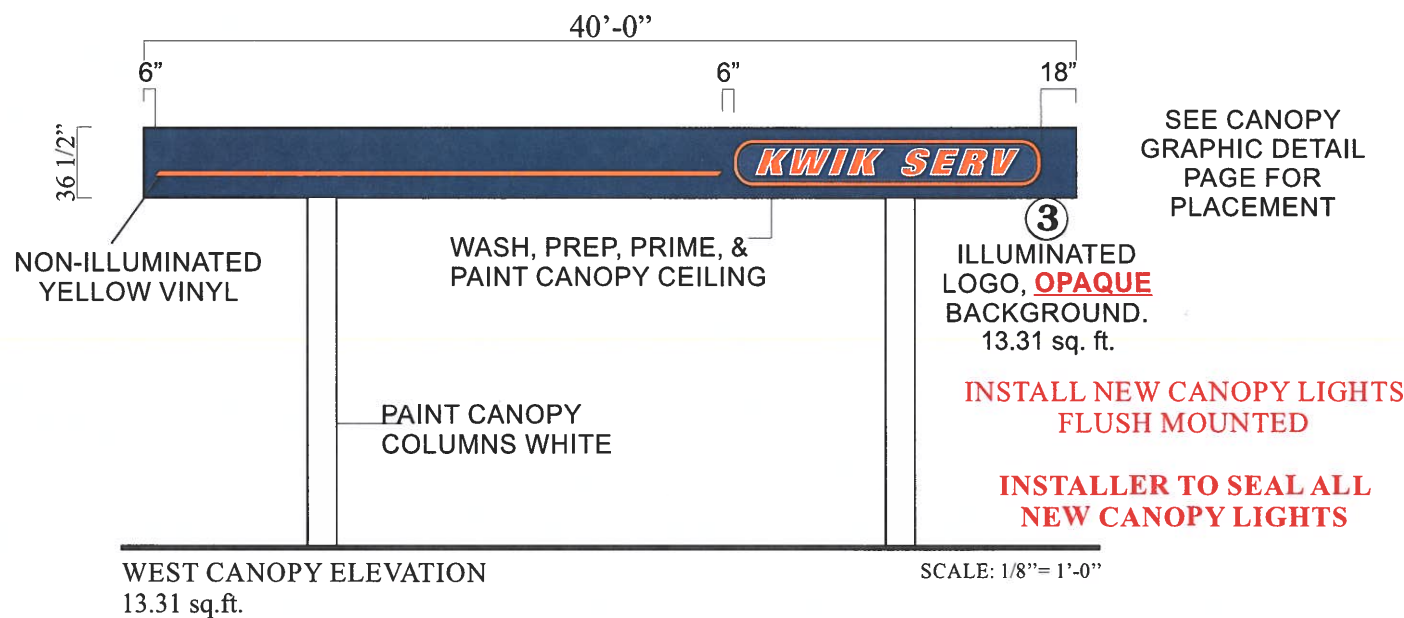


**150 PLACERVILLE DR.
 PLACERVILLE, CA 95667**



PAINT CANOPY COLUMNS WHITE.
 PAINT ALL BUMPER POLES KWIK SERV BLUE.
 PAINT ISLAND CURBS (FACES ONLY) GLOSS BLACK.
 PAINT FILL TANK LIDS.
 INSTALL NEW TRASH CADDIES
 INSTALL TANK TAGS.

PAINT FILL TANK LIDS
 UNLEADED = WHITE
 UNLEADED PLUS = BLUE
 UNLEADED PREMIUM = RED
 DIESEL #2 = GREEN



EXISTING WEST CANOPY ELEVATION



Sign Development Inc.

License #576277

Upland, CA 91786 (909) 920-5535

PROPRIETARY INFORMATION. The information disclosed in this document, including all drawings, designs and related materials, is the valuable and proprietary information of Sign Development Inc. It is provided solely for the purpose of evaluation for purchase and, without the express written authorization of Sign Development Inc., may not be disclosed or duplicated, in whole or in part, for any reason. Sign Development Inc. expressly reserves all patent, copyright and other proprietary rights to this document, including all design, manufacturing, reproduction, use, and sales rights thereto. © 2011 SIGN DEVELOPMENT INC.

CUSTOMER APPROVAL

SIGN AND PRINT FULL NAME

DATE

NO. W9230

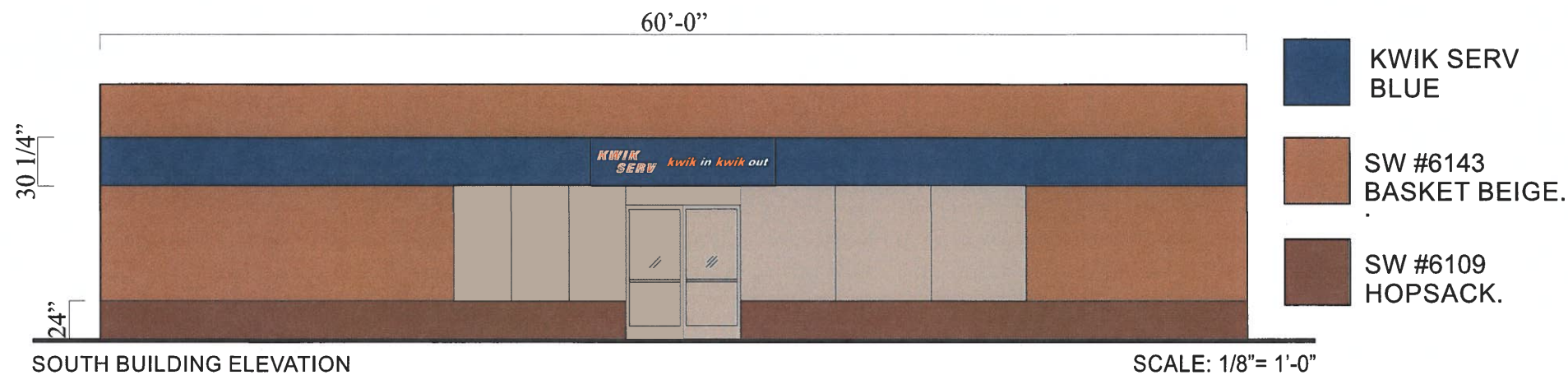
PAGE: 4 OF 7

DATE: 09.23.20SM

REV: 10.12.20SM 10.23.20SM



**150 PLACERVILLE DR.
 PLACERVILLE, CA 95667**



EXISTING SOUTH BUILDING ELEVATION

REMOVE ALL EXISTING AD SIGNS AND BANNERS FROM BUILDING.
 PAINT BUILDING SW #6143 BASKET BEIGE.
 PAINT LOWER WAINSCOT SW #6109 HOPSACK.
 PAINT BUILDING FASCIA KWIK SERV BLUE.
 PAINT ALL BUMPER POLES KWIK SERV BLUE.
 INSTALL NEW NON-ILLUMINATED ACM PANEL.
 PAINT PREVIOUSLY PAINTED STOREFRONT CURBS GLOSS BLACK.



SCALE: 3/8"= 1'-0"

- ④ INSTALL NEW NON-ILLUMINATED ACM PANEL,
 CENTERED ON FASCIA ABOVE ENTRANCE DOORS.
 24.36 sq.ft.



REMOVE ALL EXISTING AD SIGNS AND BANNERS FROM BUILDING.
 PAINT CAR WASH BUILDING SW #6143 BASKET BEIGE.
 PAINT LOWER WAINSCOT SW #6109 HOPSACK.
 PAINT CAR WASH BUILDING FASCIA KWIK SERV BLUE.
 PAINT ALL BUMPER POLES KWIK SERV BLUE.
 PAINT PREVIOUSLY PAINTED PERIMETER CURBS GLOSS BLACK.
 PAINT PREVIOUSLY PAINTED LIGHT STANDARDS WHITE.



Sign Development Inc.

License #576277

Upland, CA 91786 (909) 920-5535

PROPRIETARY INFORMATION. The information disclosed in this document, including all drawings, designs and related materials, is the valuable and proprietary information of Sign Development Inc. It is provided solely for the purpose of evaluation for purchase and, without the express written authorization of Sign Development Inc., may not be disclosed or duplicated, in whole or in part, for any reason. Sign Development Inc. expressly reserves all patent, copyright and other proprietary rights to this document, including all design, manufacturing, reproduction, use, and sales rights thereto. © 2011 SIGN DEVELOPMENT INC.

CUSTOMER APPROVAL

SIGN AND PRINT FULL NAME

DATE

NO. W9230

PAGE: 5 OF 7

DATE: 09.23.20SM

REV: 10.12.20SM 10.23.20SM



150 PLACERVILLE DR.
 PLACERVILLE, CA 95667

⑤



⑥



⑦

REMOVE ALL EXISTING AD SIGNS AND BANNERS FROM BUILDING.
 PAINT CAR WASH BUILDING SW #6143 BASKET BEIGE.
 PAINT LOWER WAINSCOT SW #6109 HOPSACK.
 PAINT CAR WASH BUILDING FASCIA KWIK SERV BLUE.
 PAINT ALL BUMPER POLES KWIK SERV BLUE.
 PAINT PREVIOUSLY PAINTED PERIMETER CURBS GLOSS BLACK.
 PAINT PREVIOUSLY PAINTED LIGHT STANDARDS WHITE.



KWIK SERV
BLUE



SW #6143
BASKET BEIGE.



SW #6109
HOPSACK.

73 1/4"

12" [Car Wash

46 1/4"

12" [Enter

32 1/4"

12" [Exit

- ⑤ INSTALL NEW NON-ILLUMINATED WHITE CAR WASH VINYL COPY. INSTALL 1:1, CENTERED ON CAR WASH FASCIA.
6.10 sq.ft.

- ⑦ INSTALL NEW NON-ILLUMINATED WHITE ENTER VINYL COPY. INSTALL 1:1, CENTERED ON CAR WASH FASCIA.
3.85 sq.ft.

- ⑥ INSTALL NEW NON-ILLUMINATED WHITE EXIT VINYL COPY. INSTALL 1:1, CENTERED ON CAR WASH FASCIA.
2.68 sq.ft.



Sign Development Inc.

License #576277

Upland, CA 91786 (909) 920-5535

PROPRIETARY INFORMATION. The information disclosed in this document, including all drawings, designs and related materials, is the valuable and proprietary information of Sign Development Inc. It is provided solely for the purpose of evaluation for purchase and, without the express written authorization of Sign Development Inc., may not be disclosed or duplicated, in whole or in part, for any reason. Sign Development Inc. expressly reserves all patent, copyright and other proprietary rights to this document, including all design, manufacturing, reproduction, use, and sales rights thereto. © 2011 SIGN DEVELOPMENT INC.

CUSTOMER APPROVAL

SIGN AND PRINT FULL NAME

DATE

NO. W9230

PAGE: 6 OF 7

DATE: 09.23.20SM

REV: 10.12.20SM 10.23.20SM

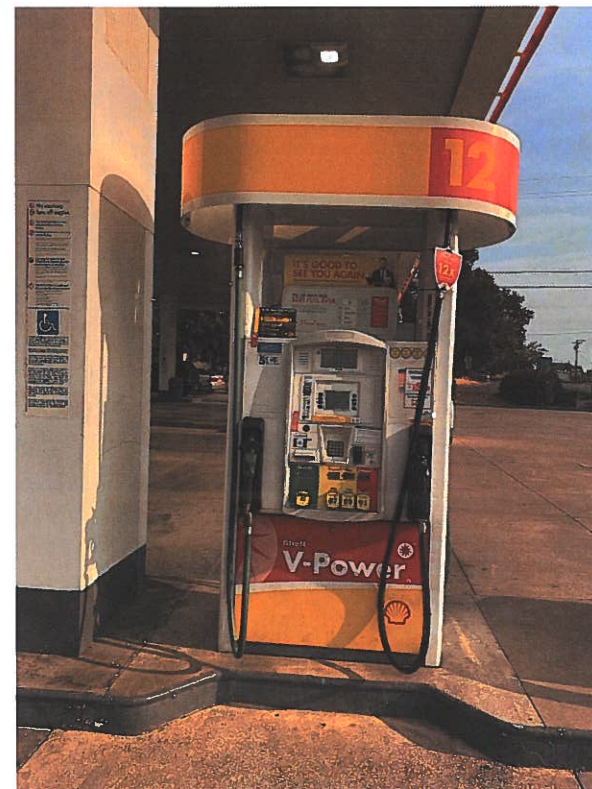


**150 PLACERVILLE DR.
PLACERVILLE, CA 95667**

REIMAGE SIX (6)
EXISTING DISPENSERS



GASOLINE 2



EXISTING PRODUCT GRADE
DECALS MUST BE REMOVED,
PRIOR TO INSTALLING NEW.

INSTALL NEW KWIK SERV
BRANDED TANK TAGS.



Sign Development Inc.

License #576277

Upland, CA 91786 (909) 920-5535

PROPRIETARY INFORMATION. The information disclosed in this document, including all drawings, designs and related materials, is the valuable and proprietary information of Sign Development Inc. It is provided solely for the purpose of evaluation for purchase and, without the express written authorization of Sign Development Inc., may not be disclosed or duplicated, in whole or in part, for any reason. Sign Development Inc. expressly reserves all patent, copyright and other proprietary rights to this document, including all design, manufacturing, reproduction, use, and sales rights thereto. © 2011 SIGN DEVELOPMENT INC.

CUSTOMER APPROVAL

SIGN AND PRINT FULL NAME

DATE

NO. W9230

DATE: 09.23.20SM

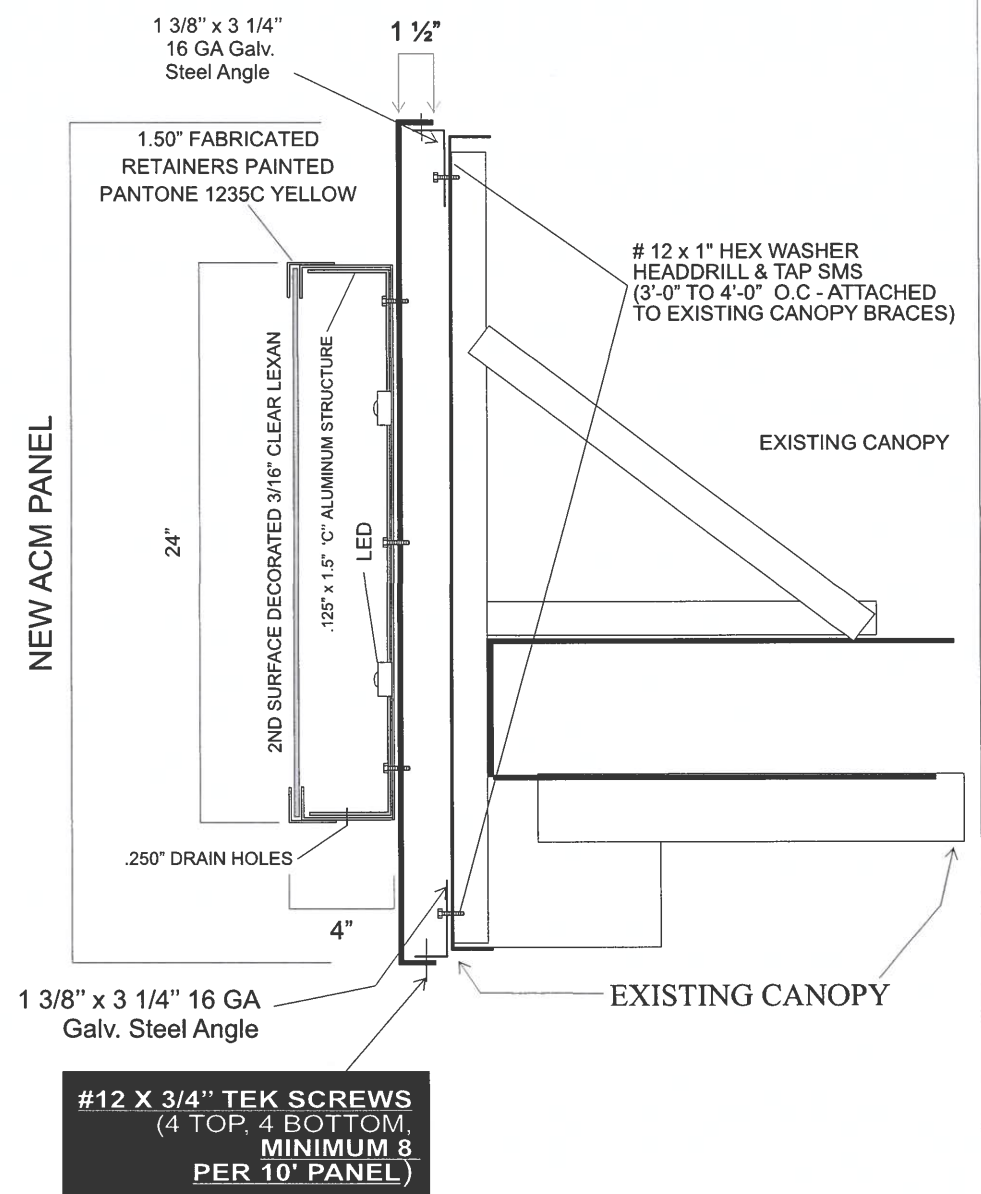
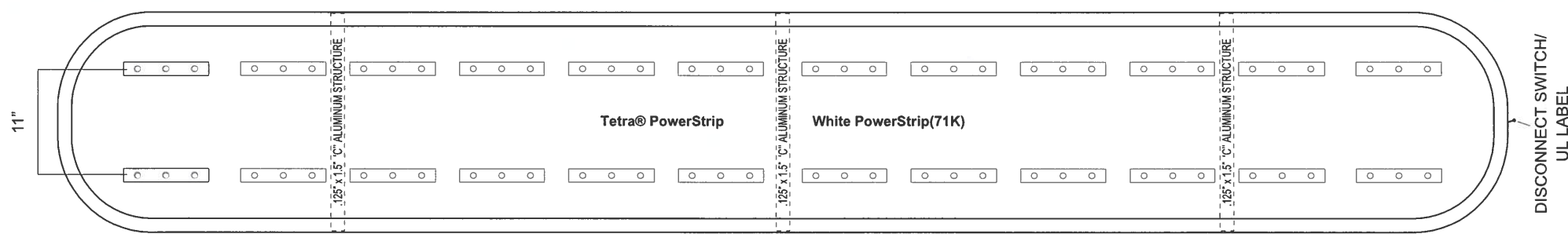
REV: 10.12.20SM 10.23.20SM

PAGE: 7 OF 7

DISP.



150 PLACERVILLE DR.
PLACERVILLE, CA 95667



.090 ALUMINUM FABRICATED CABINET
PAINTED PANTONE 1235C YELLOW

SECTION

SCALE: 1 1/2" = 1'-0"

ACM FASCIA WITH ILLUMINATED LOGO
CAN-1



Sign Development Inc.
License #576277
Upland, CA 91786 (909) 920-5535

PROPRIETARY INFORMATION. The information disclosed in this document, including all drawings, designs and related materials, is the valuable and proprietary information of Sign Development Inc. It is provided solely for the purpose of evaluation for purchase and, without the express written authorization of Sign Development Inc., may not be disclosed or duplicated, in whole or in part, for any reason. Sign Development Inc. expressly reserves all patent, copyright and other proprietary rights to this document, including all design, manufacturing, reproduction, use, and sales rights thereto. © 2011 SIGN DEVELOPMENT INC.

CUSTOMER APPROVAL	
_____	_____
SIGN AND PRINT FULL NAME	DATE

NO. W9230	PAGE:
DATE: 09.23.20SM	
REV: 10.12.20SM 10.23.20SM	



150 PLACERVILLE DR.
PLACERVILLE, CA 95667



FIELD TRIM VINYL
STRIPE TO 45° ANGLE

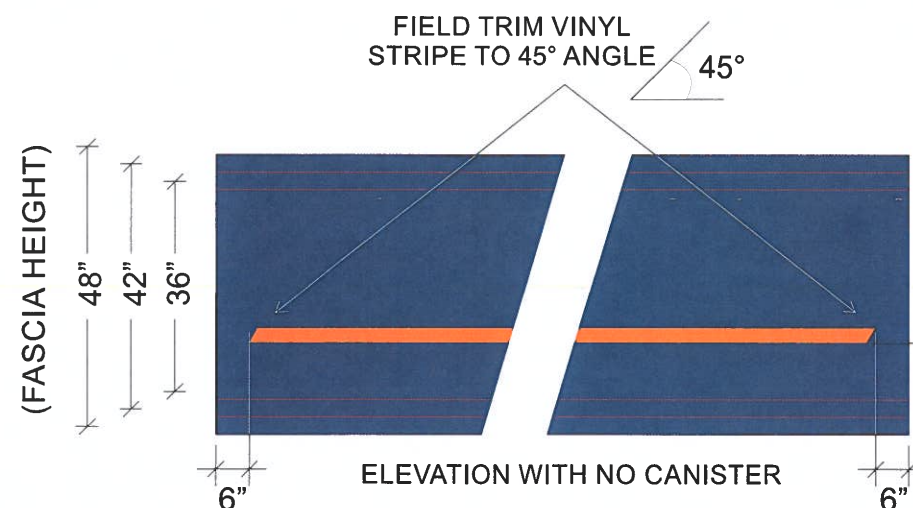
KWIK SERV CANISTER (RIGHT JUSTIFIED)



CENTER CANISTER
VERTICALLY ON FASCIA

KWIK SERV CANISTER (LEFT JUSTIFIED)

FIELD TRIM VINYL
STRIPE TO 45° ANGLE

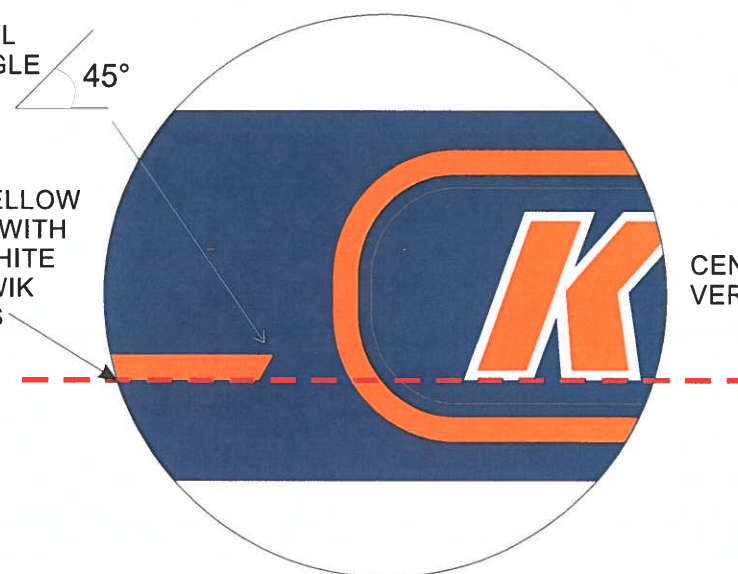


ELEVATION WITH NO CANISTER

VARIES BY
FASCIA HEIGHT
(SEE DETAIL)

FIELD TRIM VINYL
STRIPE TO 45° ANGLE

BOTTOM OF YELLOW
STRIPE LEVEL WITH
BOTTOM OF WHITE
STROKE OF KWIK
SERV LETTERS



CENTER CANISTER
VERTICALLY ON FASCIA

CANOPY GRAPHIC DETAIL



Sign Development Inc.

License #576277

Upland, CA 91786 (909) 920-5535

CUSTOMER APPROVAL

NO. W9230

PAGE:

DATE: 09.23.20SM

REV: 10.12.20SM 10.23.20SM

SIGN AND PRINT FULL NAME

DATE



150 PLACERVILLE DR.
PLACERVILLE, CA 95667

PROPRIETARY INFORMATION. The information disclosed in this document, including all drawings, designs and related materials, is the valuable and proprietary information of Sign Development Inc. It is provided solely for the purpose of evaluation for purchase and, without the express written authorization of Sign Development Inc., may not be disclosed or duplicated, in whole or in part, for any reason. Sign Development Inc. expressly reserves all patent, copyright and other proprietary rights to this document, including all design, manufacturing, reproduction, use, and sales rights thereto. © 2011 SIGN DEVELOPMENT INC.